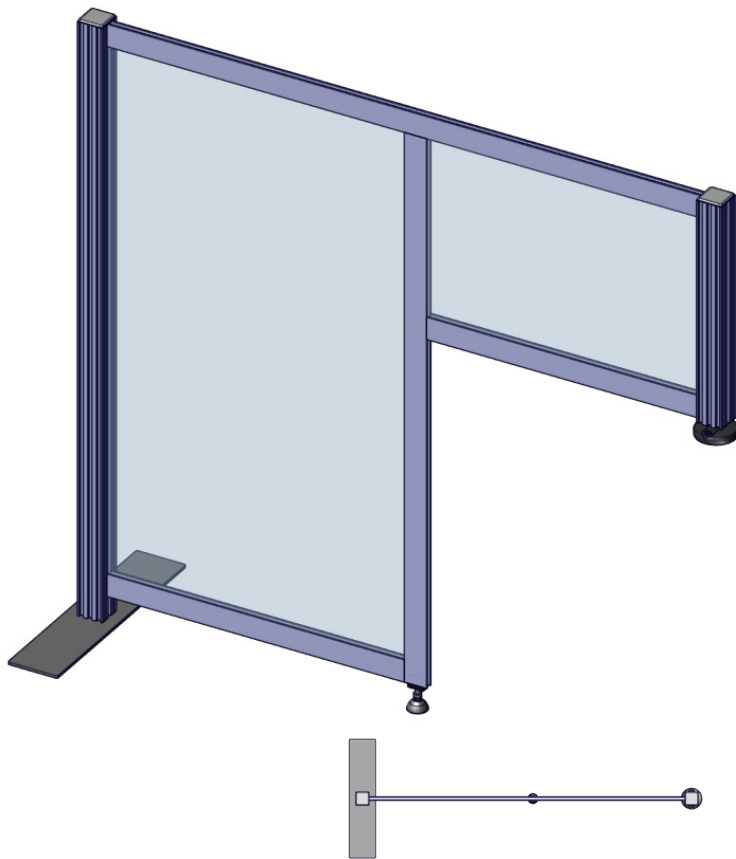


47" W x 48"H Desk Divider - Aluminum Frame Plexiglass Workstation Side Barrier

WKSTDVID

Cubicle Divider, Protection Wall & Barriers solutions. Encourage social distancing practices for employees, and guests. Work with us to customize and tailor your return to office needs. We offer table-top dividers/protectors, divider walls to place in between workstations, sliding, modular protection barriers and more. We offer many different sizes, all offered with clear plexiglass panels and your choice of aluminum feet or casters.



features and benefits:

- Quick assemble and set up
- adjustable knob ensures the hitch wall reaches the desktop sufficiently
- dividers include 1/8" clear plexiglass panels
- frame is lightweight aluminum extrusion
- 47"w x 48"h x 15.75"d workstation dividers, perfect for offices, computer labs, libraries

-47"w x 48"h x 15.75"d workstation dividers, perfect for offices, computer labs, libraries

dimensions:

Hardware

Assembled unit:
59.93" w x 47.61" h x 17.71" d
1522mm(w) x 1209mm(h) x 450mm(d)

Approximate weight with cases:
19lbs / 9 kgs

Shipping

Packing case(s):
1 BOX

Shipping dimensions:
33-44" l x 33-44" h x 4" d
838-1118mm(l) x 838-1118mm(h) x 102mm(d)

Approximate total shipping weight
(includes cases & graphics):
27-34 lbs / 13-16 kgs

additional information:

Refer to related graphic template for more information
Visit: www.exhibitors-handbook.com/graphic-templates

We are continually improving and modifying our product range and reserve the right to vary the specifications without prior notice. All dimensions and weights quoted are approximate and we accept no responsibility for variance. E&OE. See Graphic Templates for graphic bleed specifications.

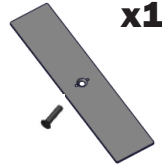


This product may include the following materials for recycle:
aluminum, select wood, fabric, cardboard, paper, steel, and plastics.

*Not to scale

ASSEMBLE FRAME

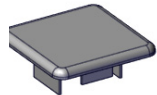
INCLUDED IN YOUR KIT:



x1

LN114-S2-450

x2



PM2S2-MCAP-2

x1



PM2S2-450-N

x1



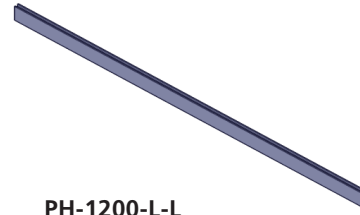
PM2S2-1200-A315

x1



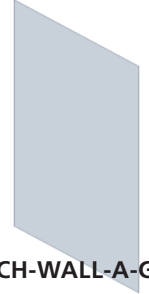
PH-1110-L

x1



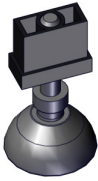
PH-1200-L-L

x1



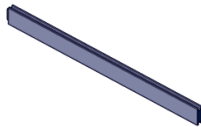
HITCH-WALL-A-G

x1



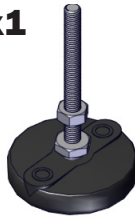
LF-8-ASM

x1



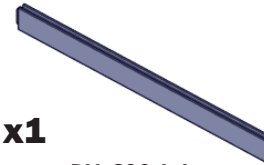
PH-555-L-L

x1



SWIVEL-FT

x1



PH-600-L-L

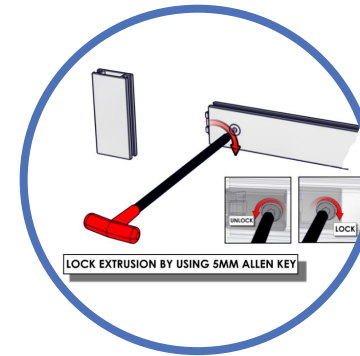
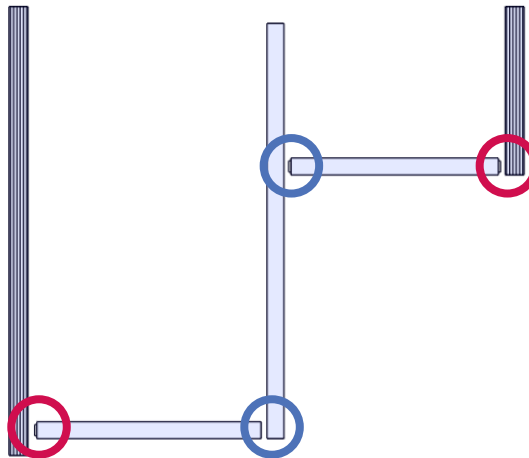
x1



HITCH-WALL-B-G

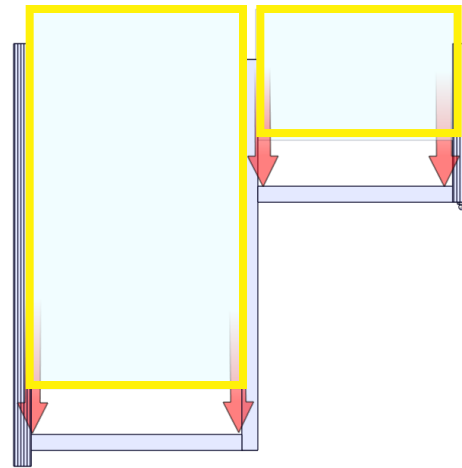
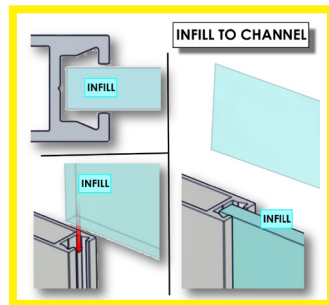
STEP 1:

Lay parts needed out on a flat clean surface or ground. Assemble as diagram show below.



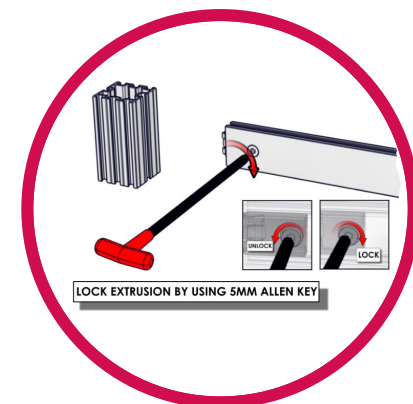
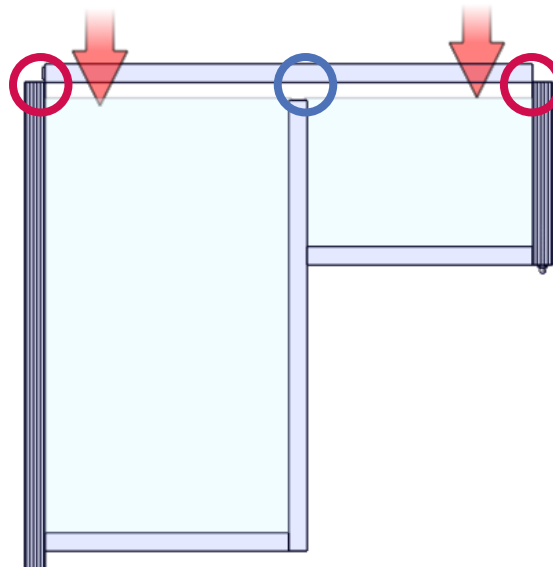
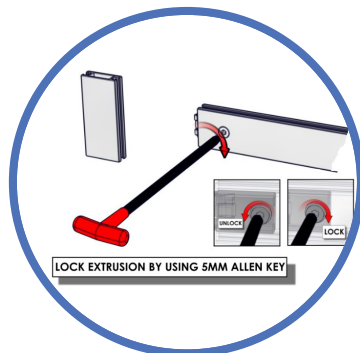
STEP 2:

insert infills



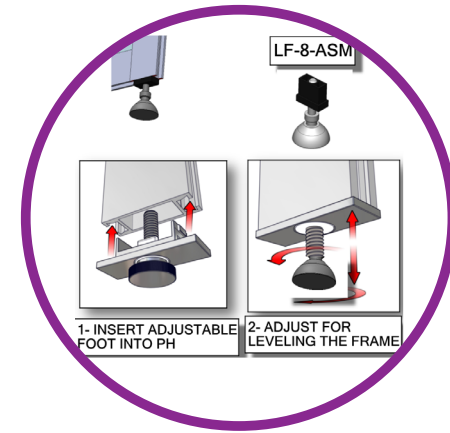
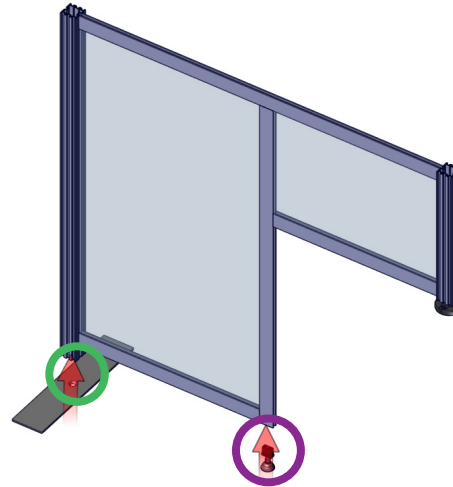
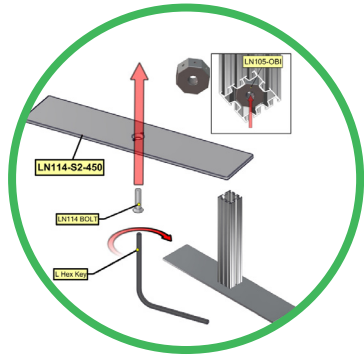
STEP 3:

Once infills are inserted attach top PH to lock infills in place.



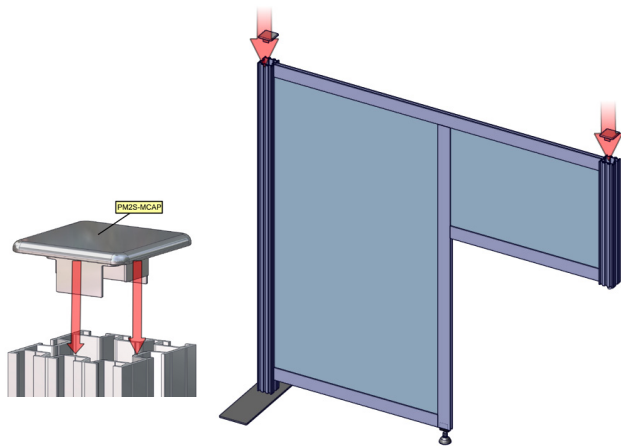
STEP 4:

Attach foot to PM2S2. Do not over tighten. Insert LF-8-ASM to PH. Just foot to proper height need to level frame.



STEP 5:

Insert Caps to top of frame



STEP 6:

Insert swivel leveling mount to PM2S2. Adjust to the height needed to level frame.

