

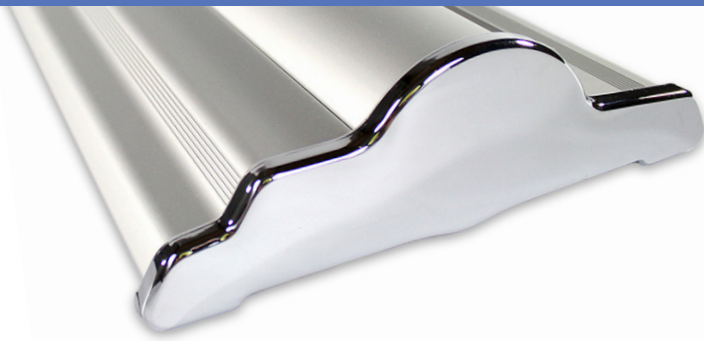
SILVERSTEP® RETRACTABLE BANNER STAND 36"

RETRACTABLE BANNER STANDS

PRODUCT CODE: SS36



On frame



PRODUCT DESCRIPTION

Durable and uniquely designed, this aluminum stand is the perfect combination of versatility, appeal, and affordability.

DISPLAY DIMENSION 37.5" W x 9.5" H x 3" D

GRAPHIC DIMENSIONS 36" W x 69" to 92" H

GRAPHIC MATERIAL

Super Flat Vinyl or Fabric

GRAPHIC FINISHING

5" Bleed at the bottom

DISPLAY CONSTRUCTION

Sturdy Aluminum Construction

SHIPPING WEIGHTS & DIMENSIONS

SINGLE BOX - 1 Unit

Shipping Weight 17 lbs (stand only)
18 lbs (frame and graphic)

Shipping Dimensions 41" H x 13" W x 5" D

MASTER BOX - 4 Units

Shipping Weight 64 lbs (stand only)
65 lbs (frame and graphic)

Shipping Dimensions 42" H x 26" W x 10" D

LARGE QUANTITY FREIGHT

Master Box - Freight Shipping 12 boxes per 48" L x 40" W x 52" H skids

Master Box - Freight Weight 384 lbs (frame only)
390 lbs (frame & graphic)

GRAPHIC TURN AROUND TIME

2 to 3 business days after proof approval

AVAILABLE ACCESSORIES

Silver Clamp Light (35 Watts) Silver Clamp Light LED

Silver Light (50 Watts) Black Light (50 Watts)

Silverstep Magnetic Connector

AVAILABILITY CA and PA



Black Base
(Optional)



Black Clamp Bar
(Optional for Super Flat Vinyl)



Silverstep Magnetic Connector
(Optional)



Black Hook & Loop Bar
(Optional for Fabric)



Silver Hook & Loop Bar
(Optional for Fabric)

SILVERSTEP® RETRACTABLE BANNER STAND 36"

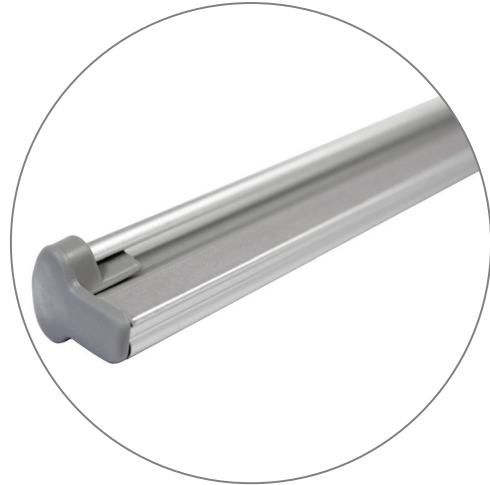
RETRACTABLE BANNER STANDS

PRODUCT CODE: SS36

PARTS LIST



Qty 1 - Silverstep Stand



Qty 1 - Clamp Bar



Qty 1 - Telescopic Support Pole



Qty 1 - Silver Travel Bag

SILVERSTEP® RETRACTABLE BANNER STAND 36"

RETRACTABLE BANNER STANDS

PRODUCT CODE: SS36

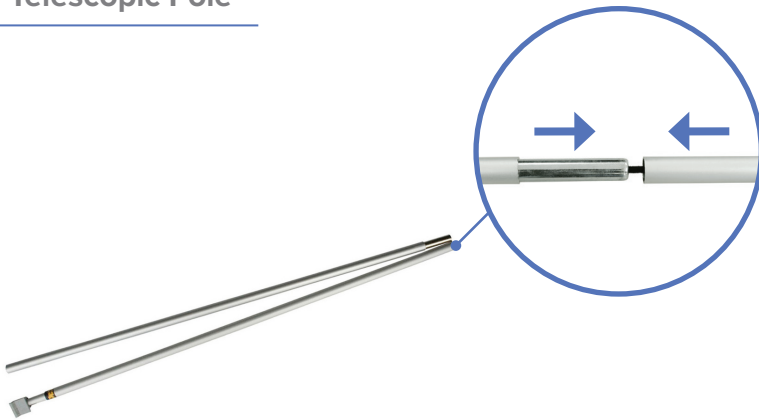
SET UP INSTRUCTIONS

Prepare Banner Stand

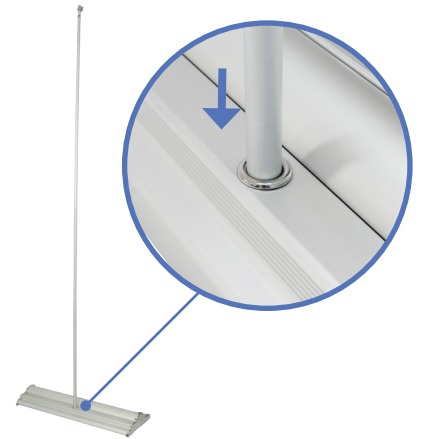


a. Remove Silverstep Stand out of bag.

Install Telescopic Pole

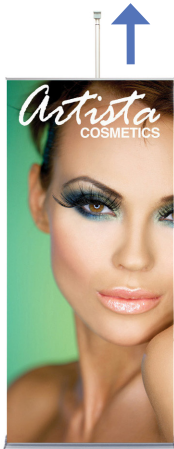


a. Assemble telescopic pole.



b. Insert telescopic pole into hole of the base stand.

Pull Up Banner



a. Pull banner out of base.



b. Attach telescopic pole to the clamp bar.
Adjust pole to desired height.



c. Complete stand.

SILVERSTEP® RETRACTABLE BANNER STAND 36"

RETRACTABLE BANNER STANDS

PRODUCT CODE: SS36

SET UP INSTRUCTIONS

Install Magnetic Connector



a. Pull off end caps from Silverstep.



b. Push connector piece until it locks in position.



c. Connect another Silverstep onto it.

Complete Connection

