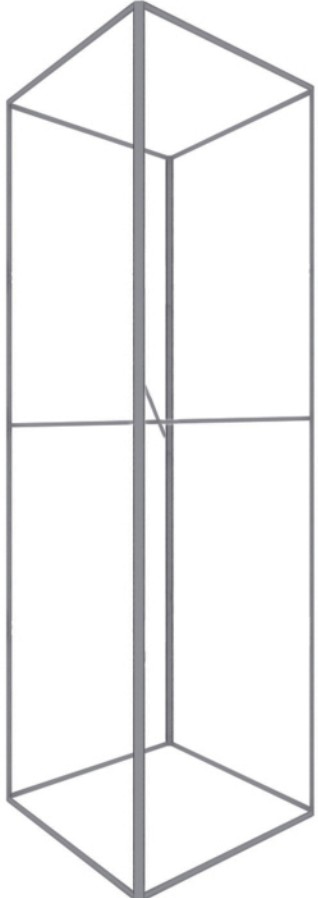


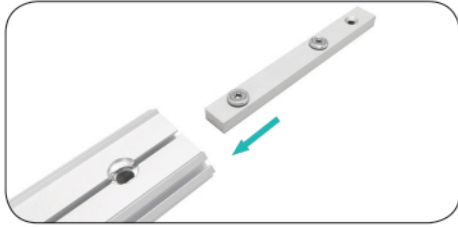
JOLLY TOWER - 5FT X 14FT (NON-BACKLIT)



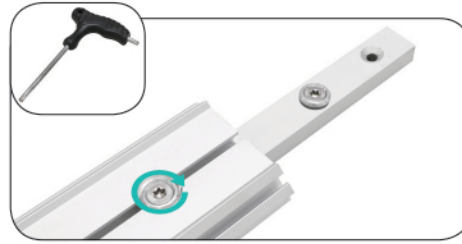
JOLLY TOWER - 5FT X 14FT (NON-BACKLIT)

SET UP INSTRUCTIONS 1/2

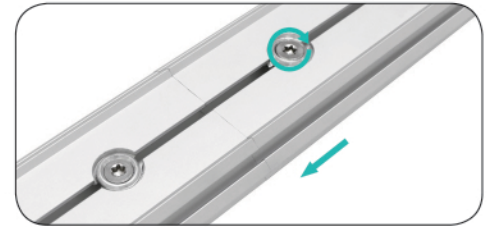
1. Attach Split Connectors to Side Extrusions:



a. Remove the screw and insert split connector into one end of the extrusion. Match like colored numbers together. (e.g. 3-3, 4-4).

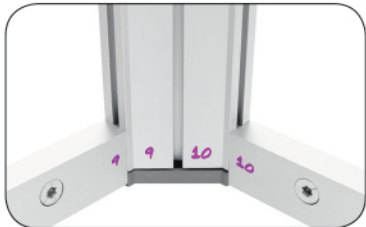


b. Tighten screw to lock it into place. Remove the remaining screw from the connector.



c. Then slide the other extrusion onto split connector. Make sure extrusions are flush and tighten the screw to secure connection.

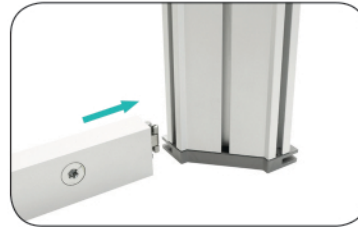
2. Locate the Bottom and Side Extrusions:



a. See colored numbers on each extrusion piece. Match like colored numbers together. (e.g. 3-3, 4-4).



b. End Lock is already attached to opposite ends of extrusion.

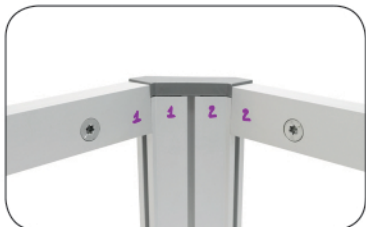


c. Connect horizontal extrusion to the bottom of a vertical extrusion, screw facing inward.



d. Connect bottom extrusions together and use torx key to tighten.

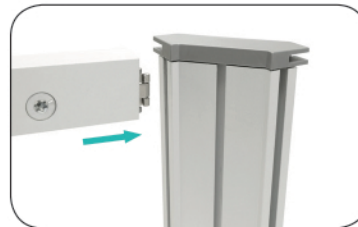
3. Locate the Top and Side Extrusions:



a. See colored numbers on each extrusion piece. Match like colored numbers together. (e.g. 3-3, 4-4).



b. End Lock is already attached to opposite ends of extrusion.

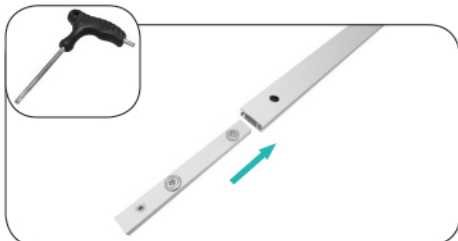


c. Connect horizontal extrusion to the top of a vertical extrusion, screw facing inward.

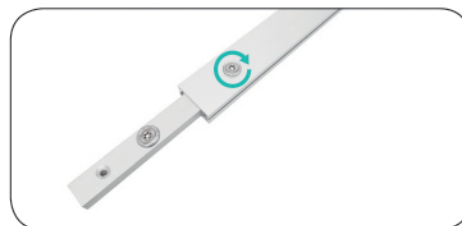


d. Connect the top extrusions together and use torx key to tighten.

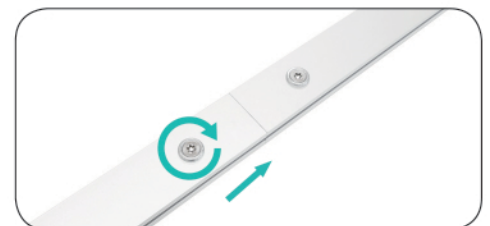
4. Build Support Struts:



a. Remove screws from Center Connector.



b. Insert Center Connector and align holes with holes on extrusion.

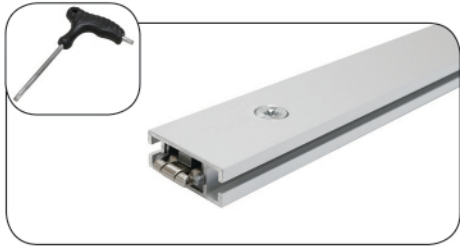


c. Repeat to connect other extrusion to make one long piece.

JOLLY TOWER - 5FT X 14FT (NON-BACKLIT)

SET UP INSTRUCTIONS 2/2

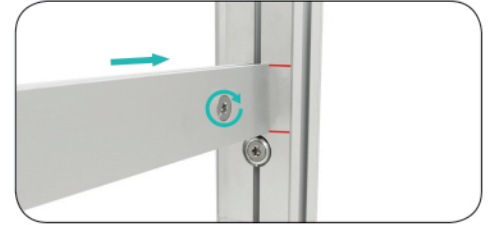
5. Attach Support Strut to Frame:



a. End Lock is already attached to opposite ends of Support Strut.



b. Align Support Struts within marked lines, and insert End Lock into top and bottom grooves of frame.



c. Add a second support strut to align marked lines and tighten screws with **torx key** to secure connection.