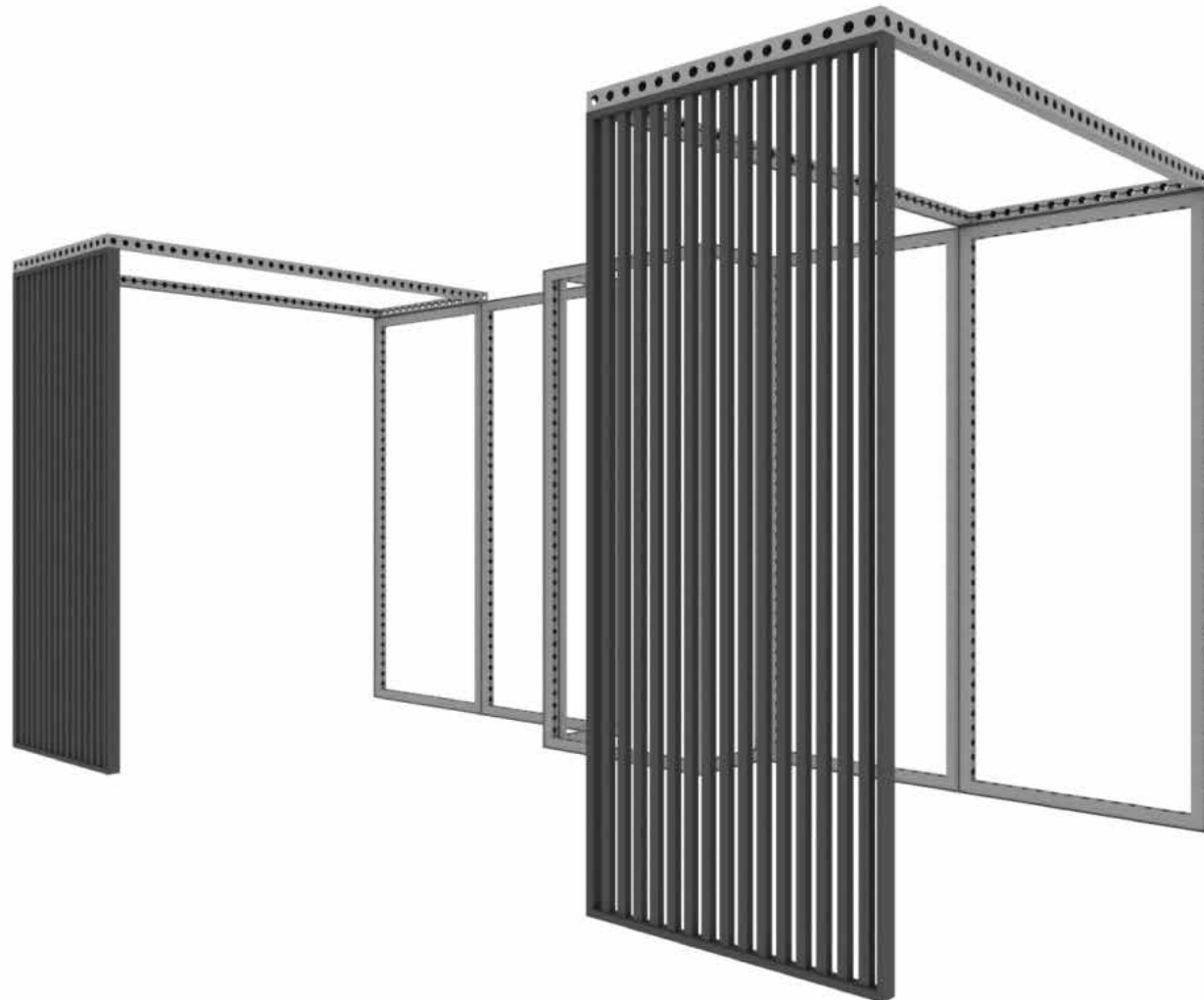


MODCO26-15x10G



PARTS LIST



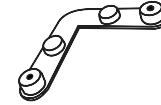
MOD-FRM-992x2418
Qty.7



AF-FTFLT
Qty.4



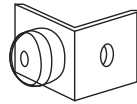
MOD-FRM-496x2418
Qty.2



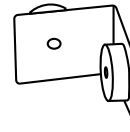
MOD-SM90D-CON
Qty.10



MOD-FRM-992x2418-LV-BLK
Qty.1



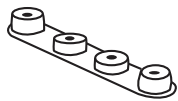
MOD-PNL-CON-LV
Qty.4



MOD-90D-CON
Qty.8



MOD-CP-3100 (992mm)
Qty.2



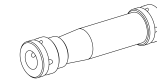
MOD-180D-CON
Qty.2



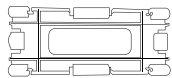
MOD-PC
Qty.32



MOD-CP-992x2418
Qty.10

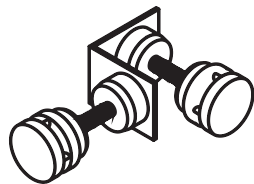


MOD-CLA-CON
Qty.4

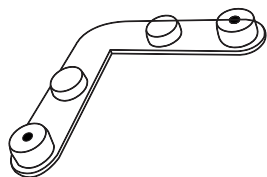
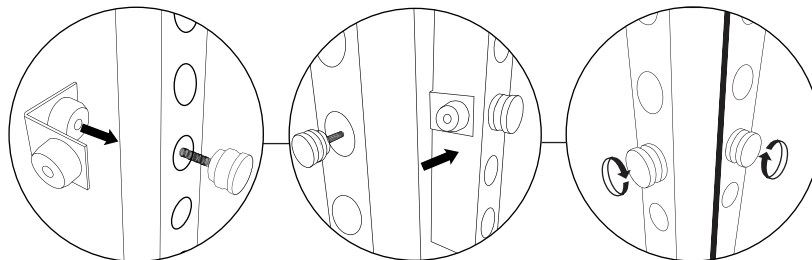


MOD-CC
Qty.20

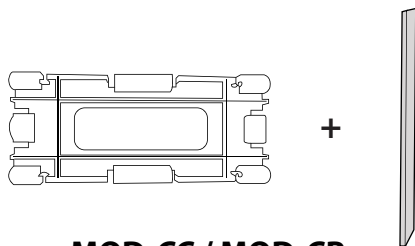
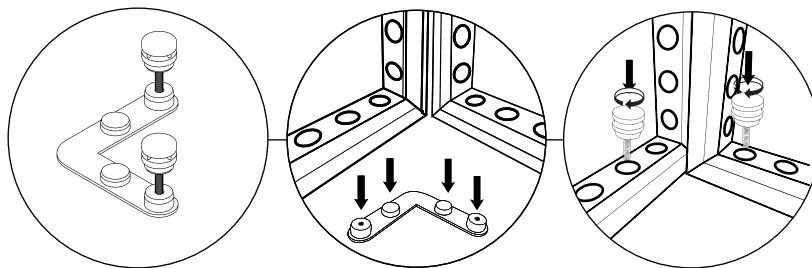
CONNECTIONS



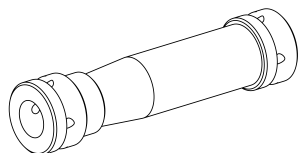
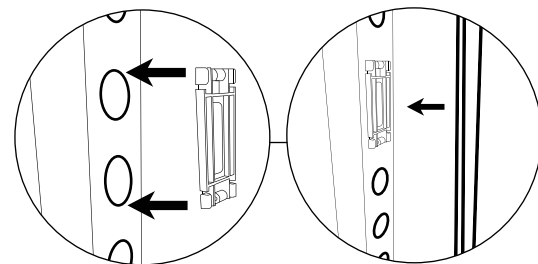
MOD-90D-CON + MOD-PC



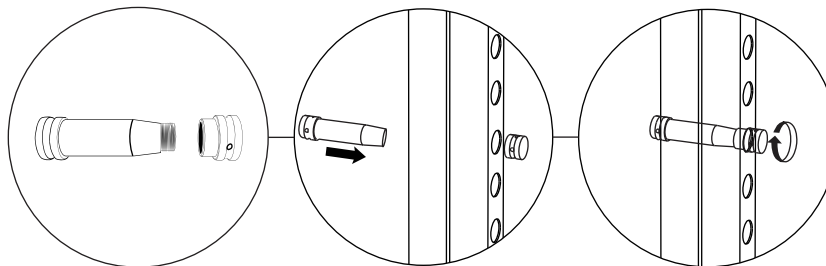
MOD-SM90D-CON / MOD-PC



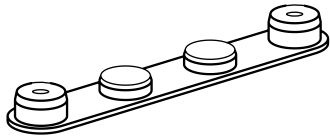
MOD-CC / MOD-CP



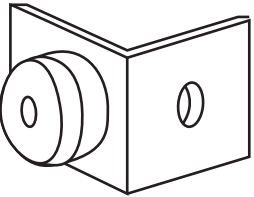
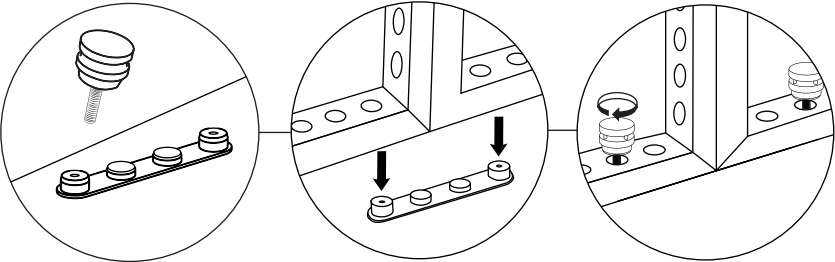
MOD-CLA-CON



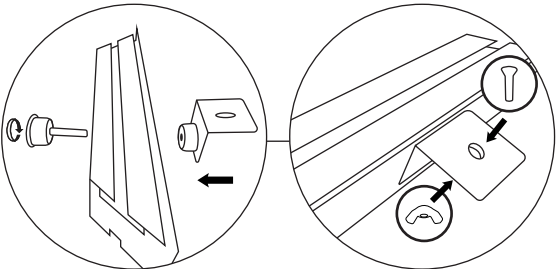
CONNECTIONS



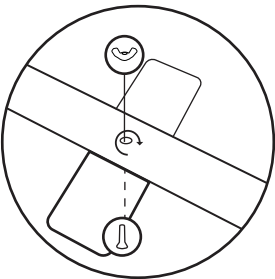
MOD-180D-CON / MOD-PC



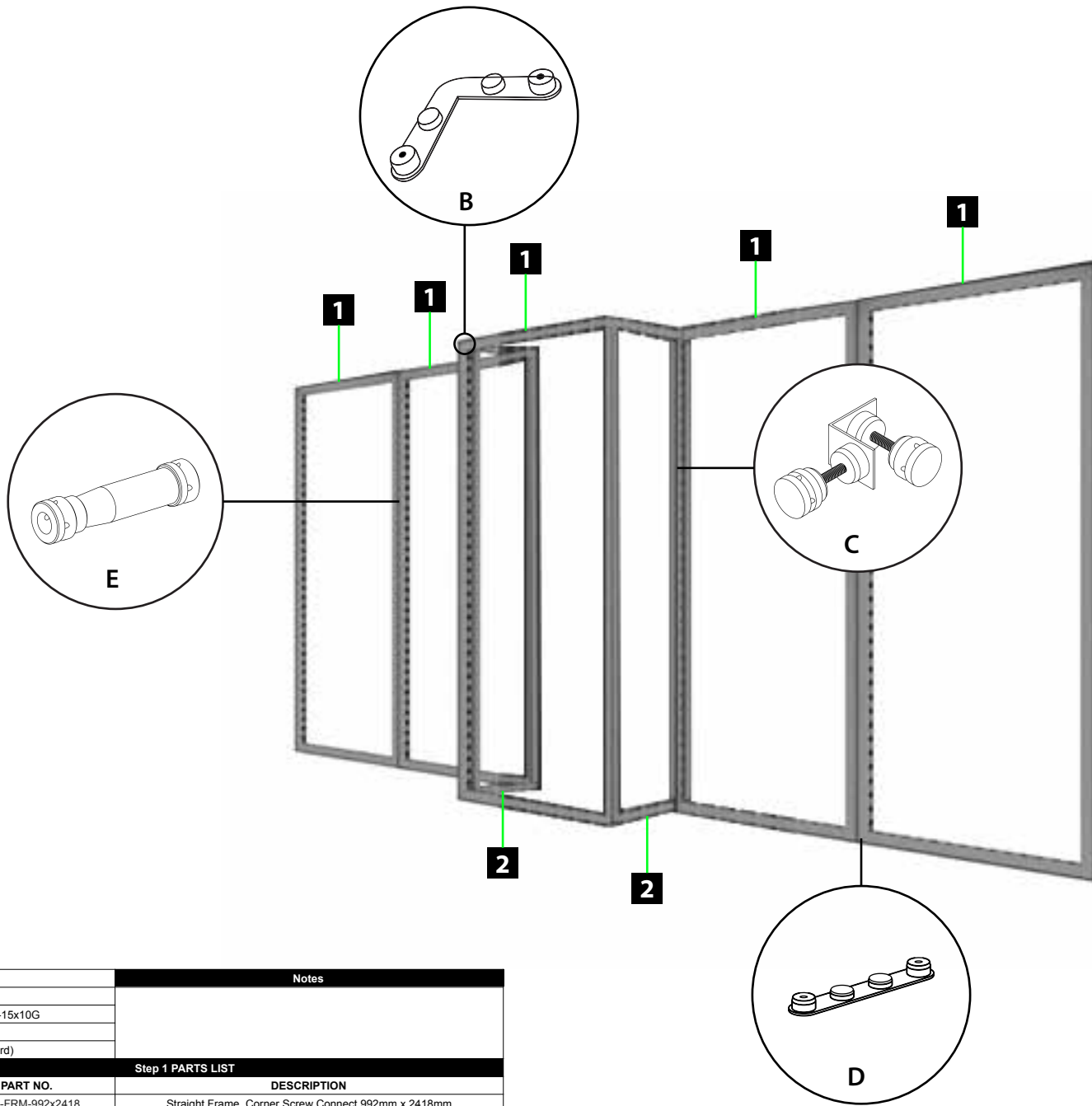
MOD-PNL-CON-LV / MOD-PCWP-A / WINGNUTS



AF-FTFLT / WINGNUTS

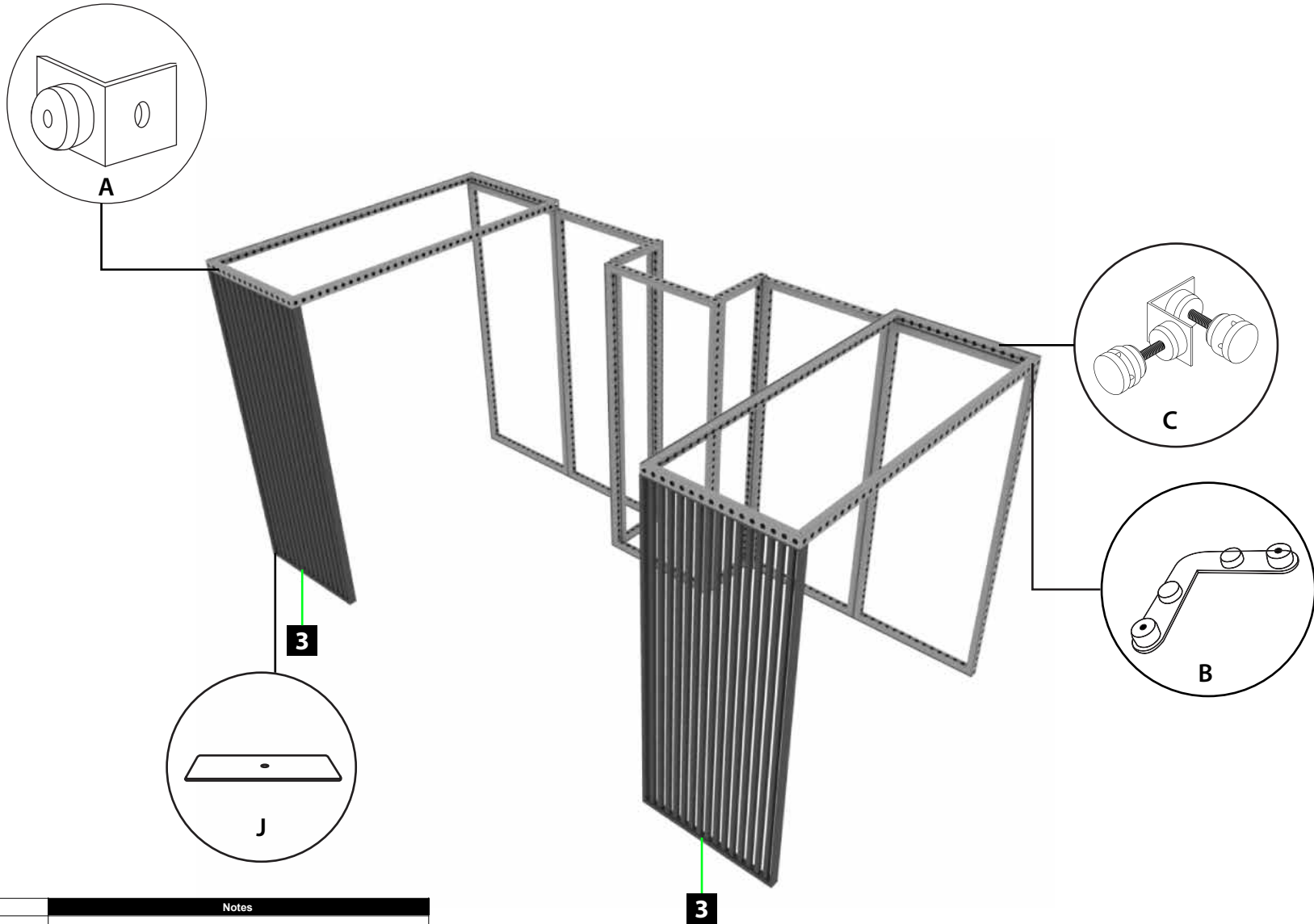


1



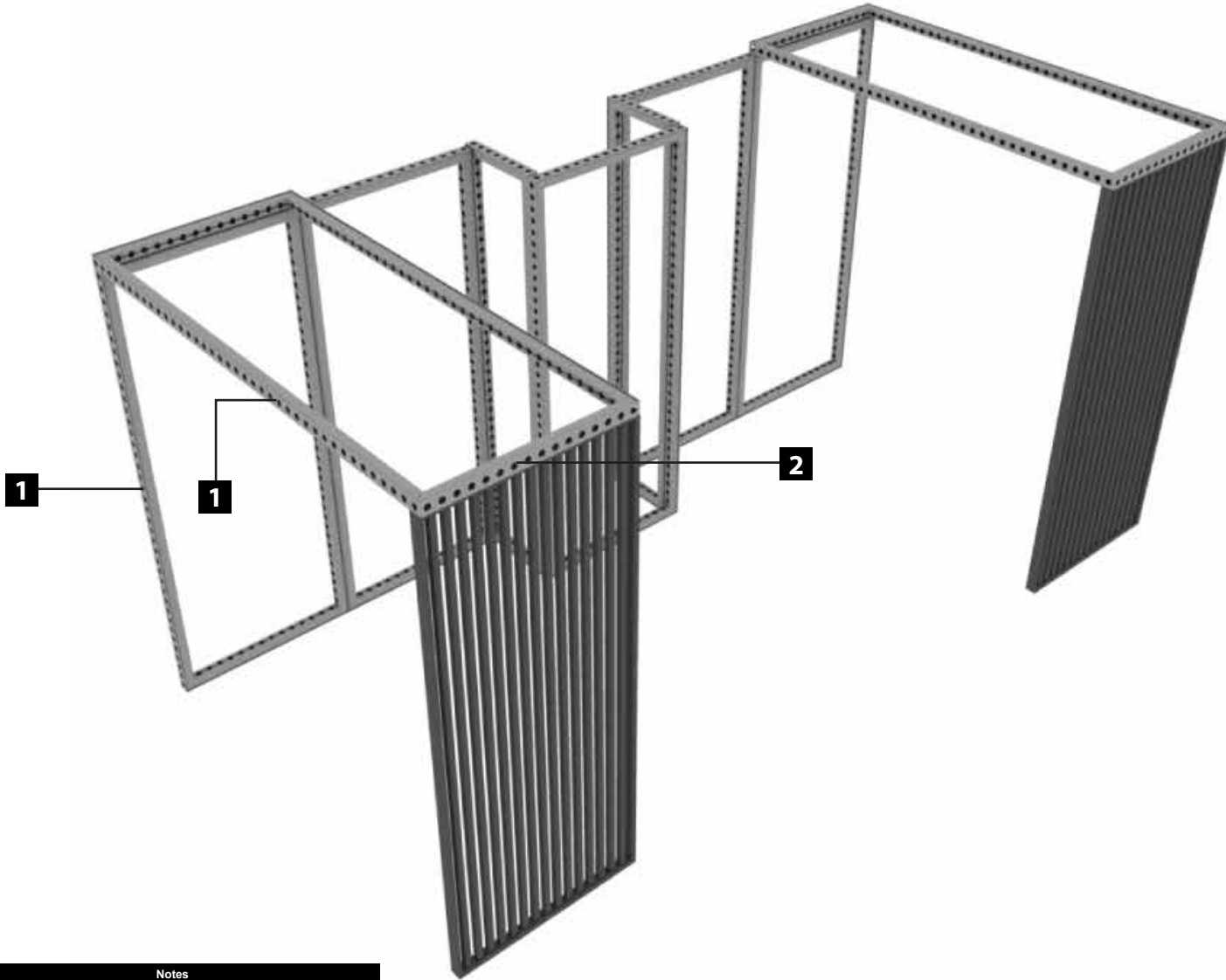
| Name: | Joey F. | Notes | |
|-------------------|----------------|------------------|---|
| Date: | Jul 12 2024 | | |
| SKU build: | MODCO26-15x10G | | |
| Location: | MX / PA | | |
| QC build: | n/a (Standard) | | |
| Step 1 PARTS LIST | | | |
| REF | QTY | PART NO. | DESCRIPTION |
| 1 | 5 | MOD-FRM-992x2418 | Straight Frame, Corner Screw Connect 992mm x 2418mm |
| 2 | 2 | MOD-FRM-496x2418 | Straight Frame, Corner Screw Connect 496mm x 2418mm |
| B | 8 | MOD-SM90D-CON | L-Shaped 90° Connector |
| C | 8 | MOD-90D-CON | 90° Connector |
| D | 4 | MOD-180D-CON | 180° Connector |
| E | 4 | MOD-CLA-CON | Clamp Connector |
| F | 40 | MOD-PC | Pin Connector |

2



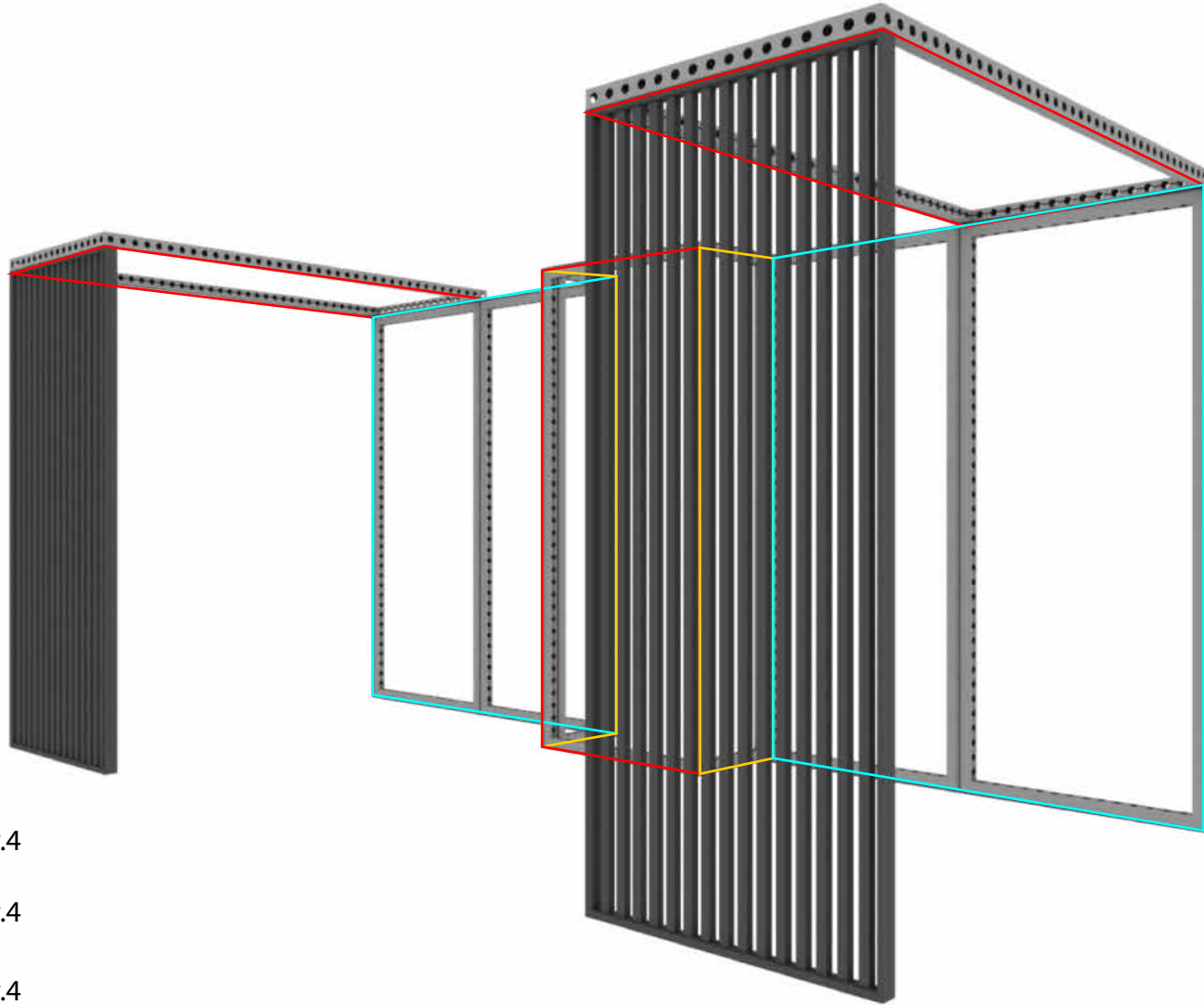
| Name: | Joey F. | Notes | |
|-------------------|----------------|-------------------------|------------------------------|
| Date: | Jul 12 2024 | | |
| SKU build: | MODCO26-15x10G | | |
| Location: | MX / PA | | |
| QC build: | n/a (Standard) | | |
| Step 2 PARTS LIST | | | |
| REF | QTY | PART NO. | DESCRIPTION |
| 3 | 2 | MOD-FRM-992x2418-LV-BLK | Louver Frame, 992mm x 2418mm |
| A | 4 | MOD-PNL-CON-B | 90° Panel Connector |
| J | 4 | AF-FTFLT | Aspen - Flat Foot |
| 3 | 2 | MOD-FRM-992x2418-LV-BLK | Louver Frame, 992mm x 2418mm |
| B | 2 | MOD-SM90D-CON | L-Shaped 90° Connector |
| C | 4 | MOD-90D-CON | 90° Connector |
| F | 16 | MOD-PC | Pin Connector |

3



| Name: Joey F. | | Notes | |
|---------------------------|-----|---|------------------------------|
| Date: Jul 12 2024 | | <ul style="list-style-type: none"> • Use (3) MOD-CC per 2418 cover profile • Use (2) MOD-CC per 992 cover profile | |
| SKU build: MODCO26-15x10G | | | |
| Location: MX / PA | | | |
| QC build: n/a (Standard) | | | |
| Step 3 PARTS LIST | | | |
| REF | QTY | PART NO. | DESCRIPTION |
| 1 | 10 | MOD-CP-992x2418 | Cover Profile 2418mm |
| 2 | 2 | MOD-CP-3100 (992mm) | Cover Profile 992mm |
| 3 | 34 | MOD-CC | Cover Profile Clip Connector |

GRAPHIC REFERENCE



-  992 x 2418 Qty.4
-  992 x 2418 Qty.4
-  496 x 2418 Qty.4

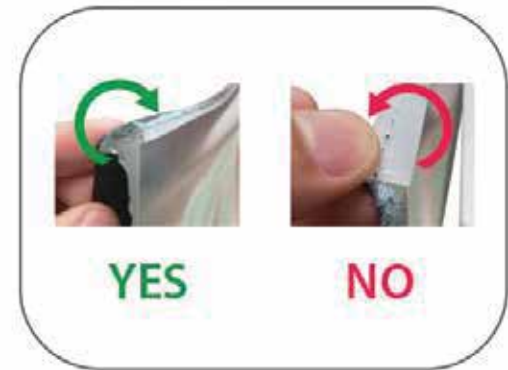
GRAPHIC INSTALL



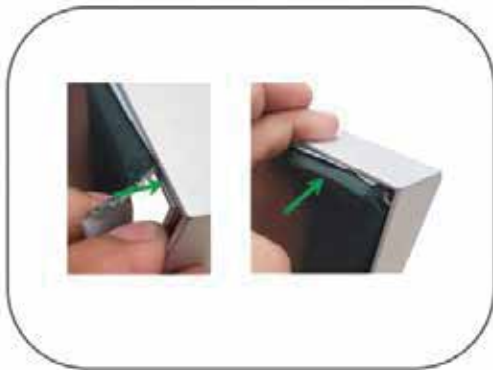
Place graphic over the front of the frame.



Begin inserting SEG beading at each corner.



Insert the silicone beading with the fabric folded over. The silicone beading should not be exposed.



Using your fingers, push both fabric and silicone beading completely into the extrusions channel.



Continue to push in the remaining silicone beading on each side.



Check the perimeter of the frame for any excess beading that hasn't been pushed in. Graphic should be taut.