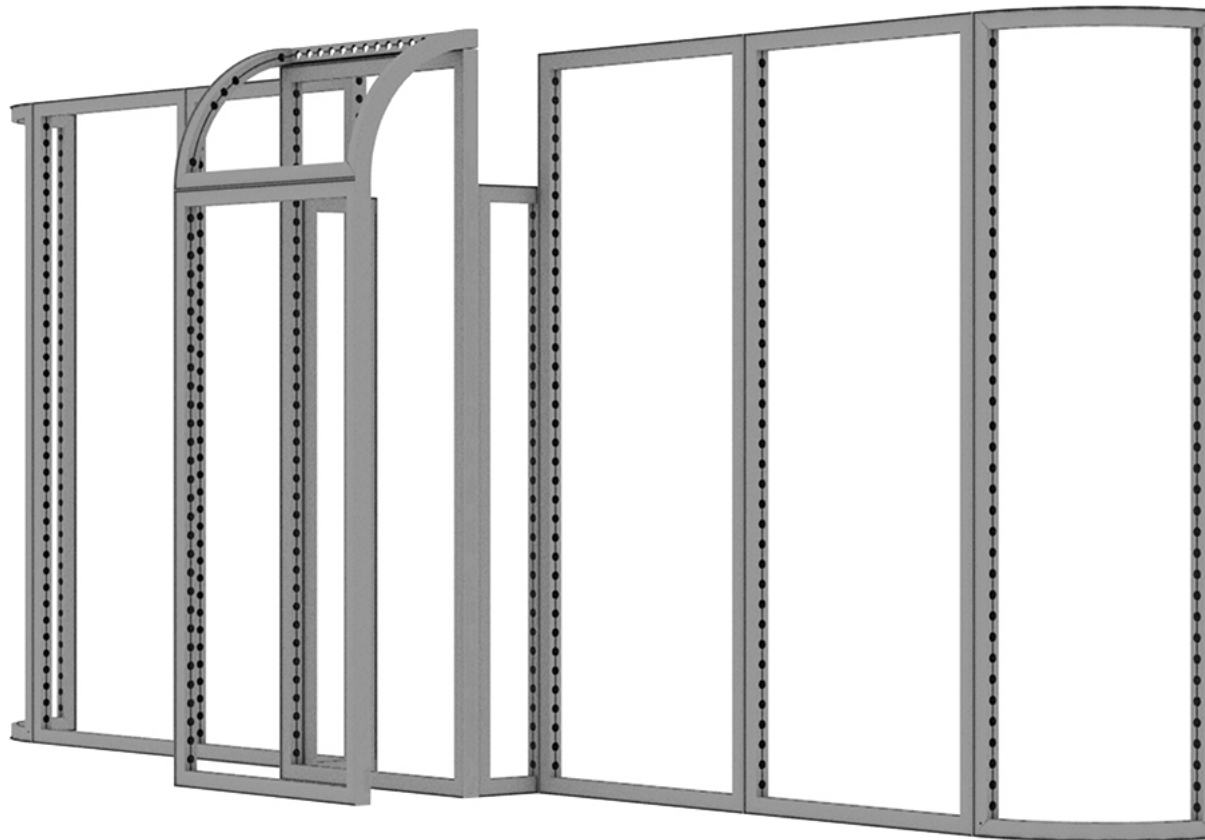
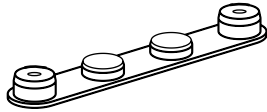


MODCO 28-20x10



PARTS LIST



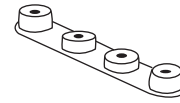
180° Connector
MOD-180D-CON
Qty.8



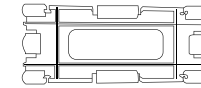
28mm Screw Nut
MOD-SN28MM
Qty.4



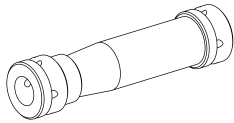
Pin Connector
MOD-PC
Qty.24



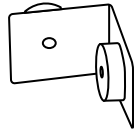
180° Curved Connector
MOD-CRV-180DCL Qty.3
MOD-CRV-180DCR Qty.3



Clip Connector
MOD-CC
Qty.10



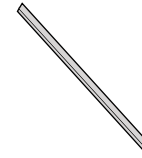
Clamp Connector
MOD-CLA-CON
Qty.10



90° Connector
MOD-90D-CON
Qty.10



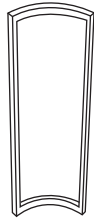
1/4 Curved Cover Profile
MOD-CP-774
Qty.2



78" Cover Profile
MOD-CP-3100
Qty.2



95" Cover Profile
MOD-CP-3100
Qty.2



774 x 2418 Curved
MOD-CRVFRM-774x992
Qty.2



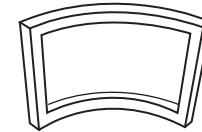
992 x 1984
MOD-FRM-992x1984
Qty.1



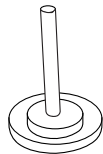
992 x 2418
MOD-FRM-992x2418
Qty.5



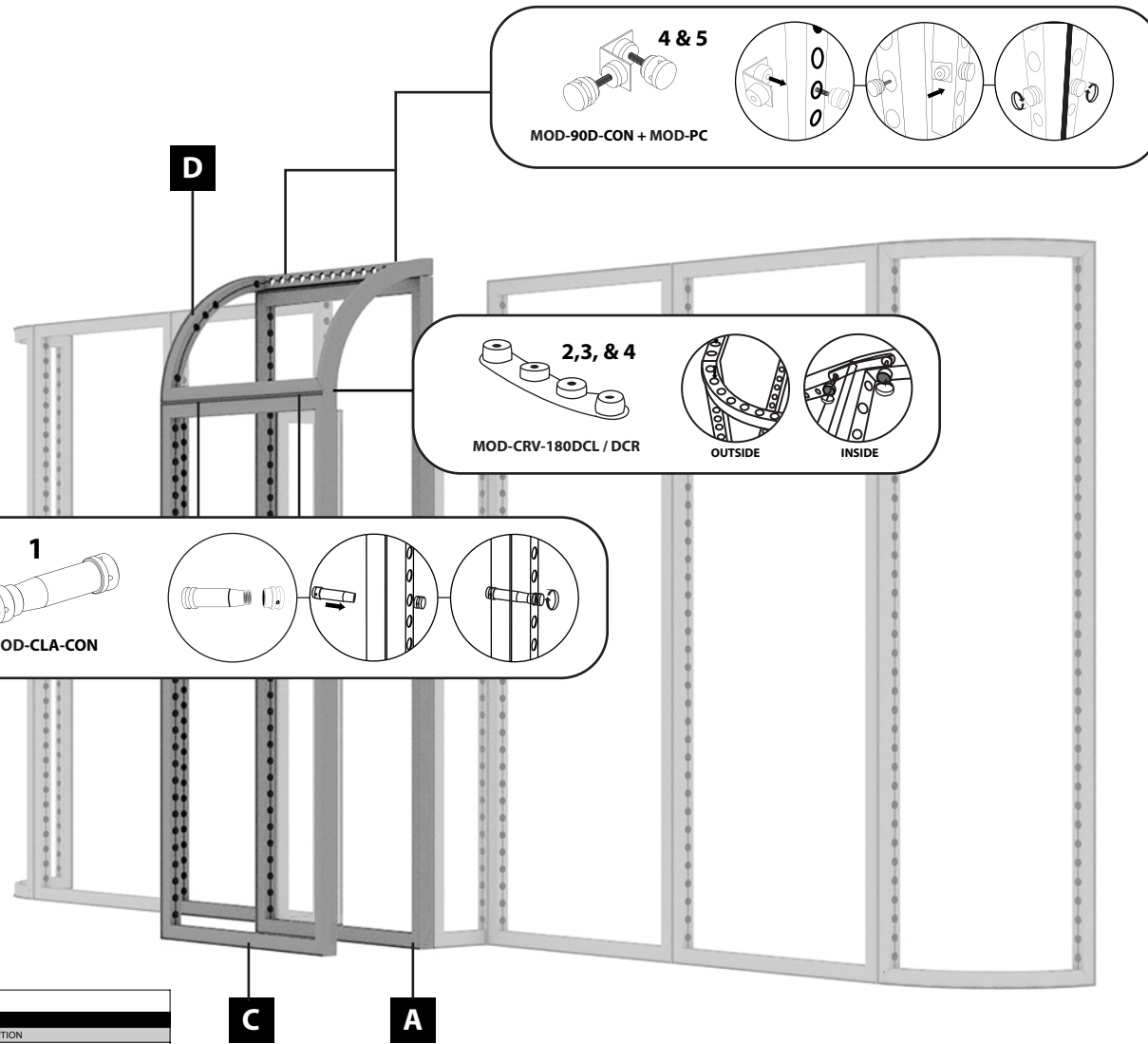
310 x 1984
MOD-FRM-310x1984
Qty.2



774 x 992
MOD-CRVFRM-774x992
Qty.1



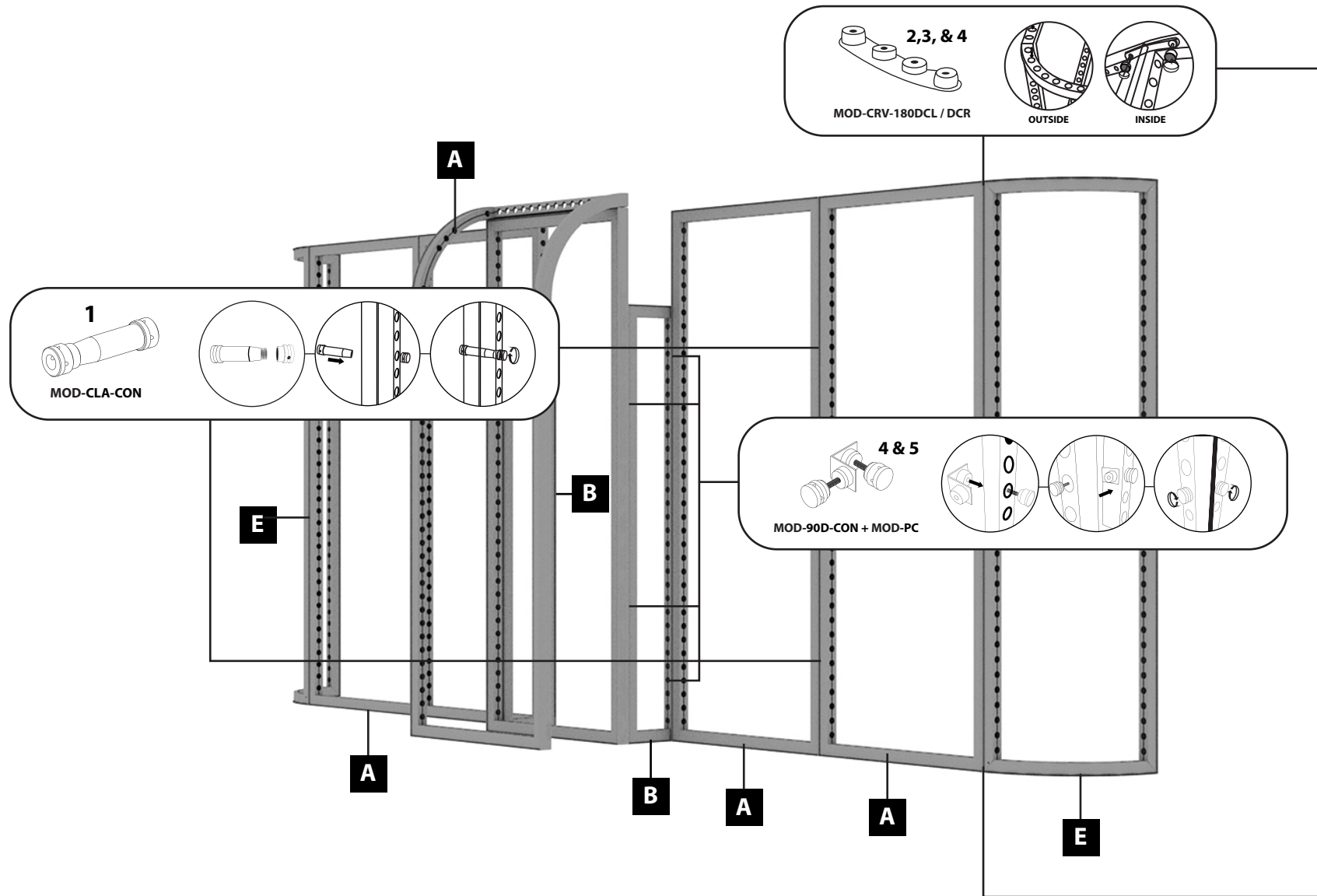
Pin Connector for Profile Cover
MOD-PCWP-B
Qty.4



Parts List Key

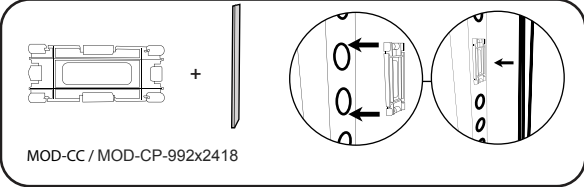
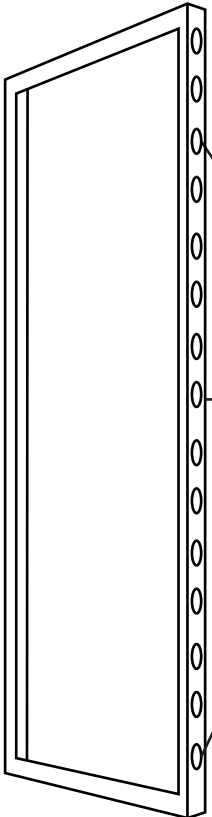
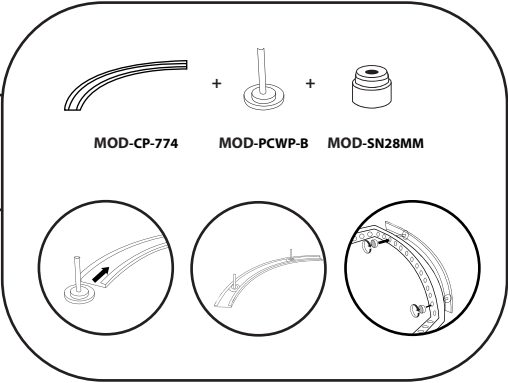
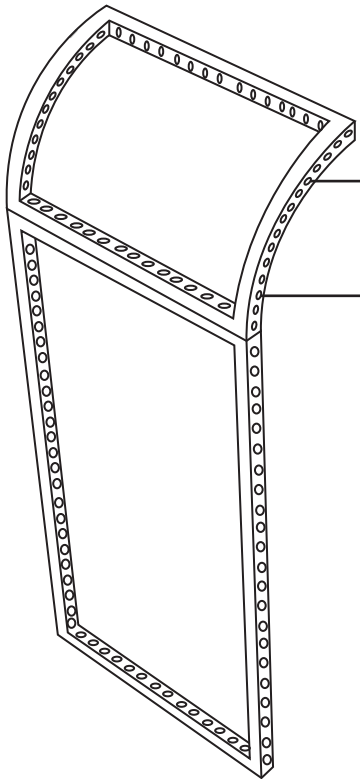
FRAMES			
REF #	QTY	PART NO.	DESCRIPTION
A	5	MOD-FRM-992x2418	Straight Frame, Corner Screw Connect 992mm x 2418mm
B	2	MOD-FRM-310x1984	Straight Frame, Corner Screw Connect 310mm x 1984mm
C	1	MOD-FRM-992x1984	Straight Frame, Corner Screw Connect 992mm x 1984mm
D	1	MOD-CRVFRM-774x992	1/4 Curved Frame, welded 774mm x 992mm
E	2	MOD-CRVFRM-774x2418	1/4 Curved Frame, welded 774mm x 2418mm

CONNECTORS, ACCESSORIES & COVER PROFILES			
REF #	QTY	PART NO.	DESCRIPTION
1	10	MOD-CLA-CON	Clamp Connector
2	3	MOD-CRV-180DCR	Modco Curve 180° (Right)
3	3	MOD-CRV-180DCL	Modco Curve 180° Connector (Left)
4	24	MOD-PC	Pin Connector
5	10	MOD-90D-CON	90° Connector
6	2	MOD-CP-992x2418	Cover Profile for Frame 992x2418. Flat Model. Anodized
7	2	MOD-CP-3100	Cover Profile 78" length
8	10	MOD-CC	Clip Connector Cover Connects Cover Profile
9	2	MOD-CP-774	Curved Cover profile 774mm(R1/4)
10	4	MOD-PCWP-B	Pin connector(Use with profile cover)
11	4	MOD-SN-28MM	28mm screw nut
12	4	MOD-180D-CON	180° Connector



- Mirror/repeat for both left and right sides.

Cover Profiles



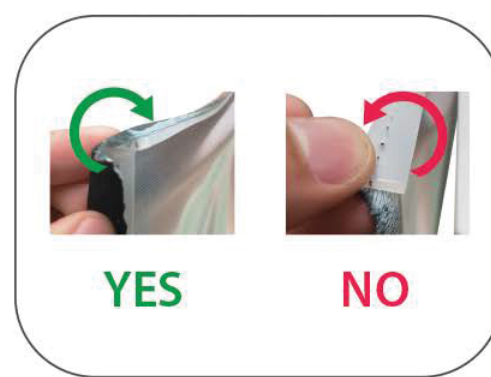
GRAPHIC INSTALL



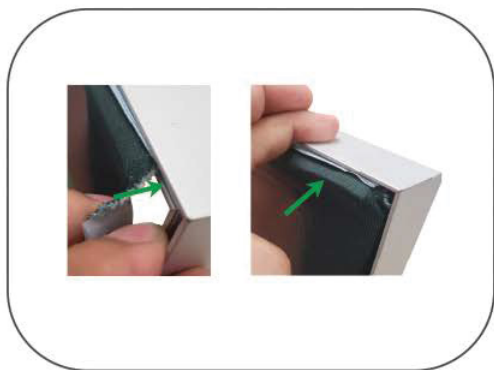
Place graphic over the front of the frame.



Begin inserting SEG beading at each corner.



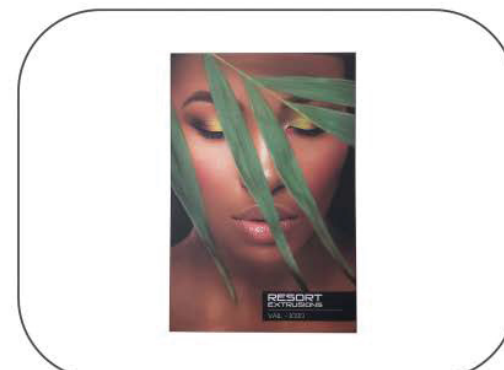
Insert the silicone beading with the fabric folded over. The silicone beading should not be exposed.



Using your fingers, push both fabric and silicone beading completely into the extrusions channel.



Continue to push in the remaining silicone beading on each side.



Check the perimeter of the frame for any excess beading that hasn't been pushed in. Graphic should be taut.