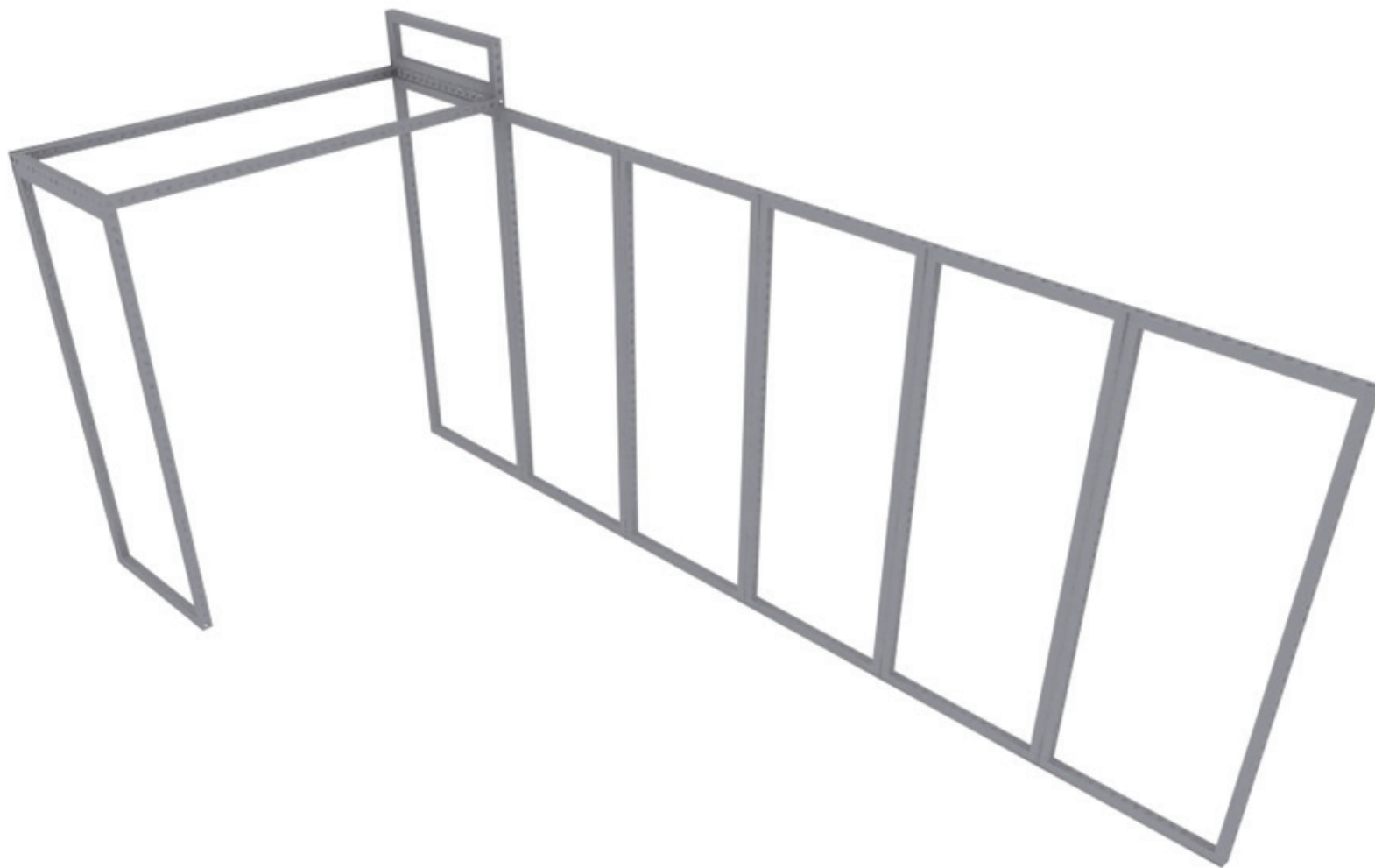
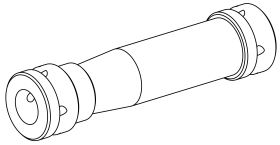


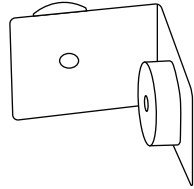
MODCO29 Instructions



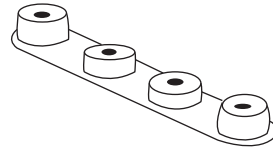
PARTS LIST



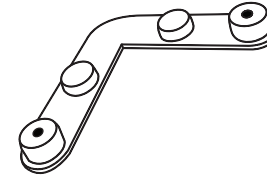
MOD-CLA-CON
Qty.12



MOD-90D-CON
Qty.3



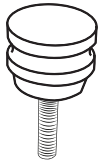
MOD-180D-CON
Qty.9



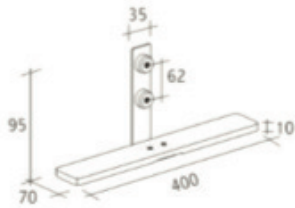
MOD-SM90D-CON
Qty.2



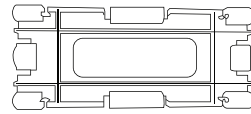
MOD-FRM-992x2418
Qty.8



MOD-PC
Qty.39



MOD-SF180D
Qty.2



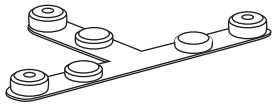
MOD-CC
Qty.22



MOD-CP-992x2418
Qty.6



MOD-CP-3100 (12'')
Qty.2



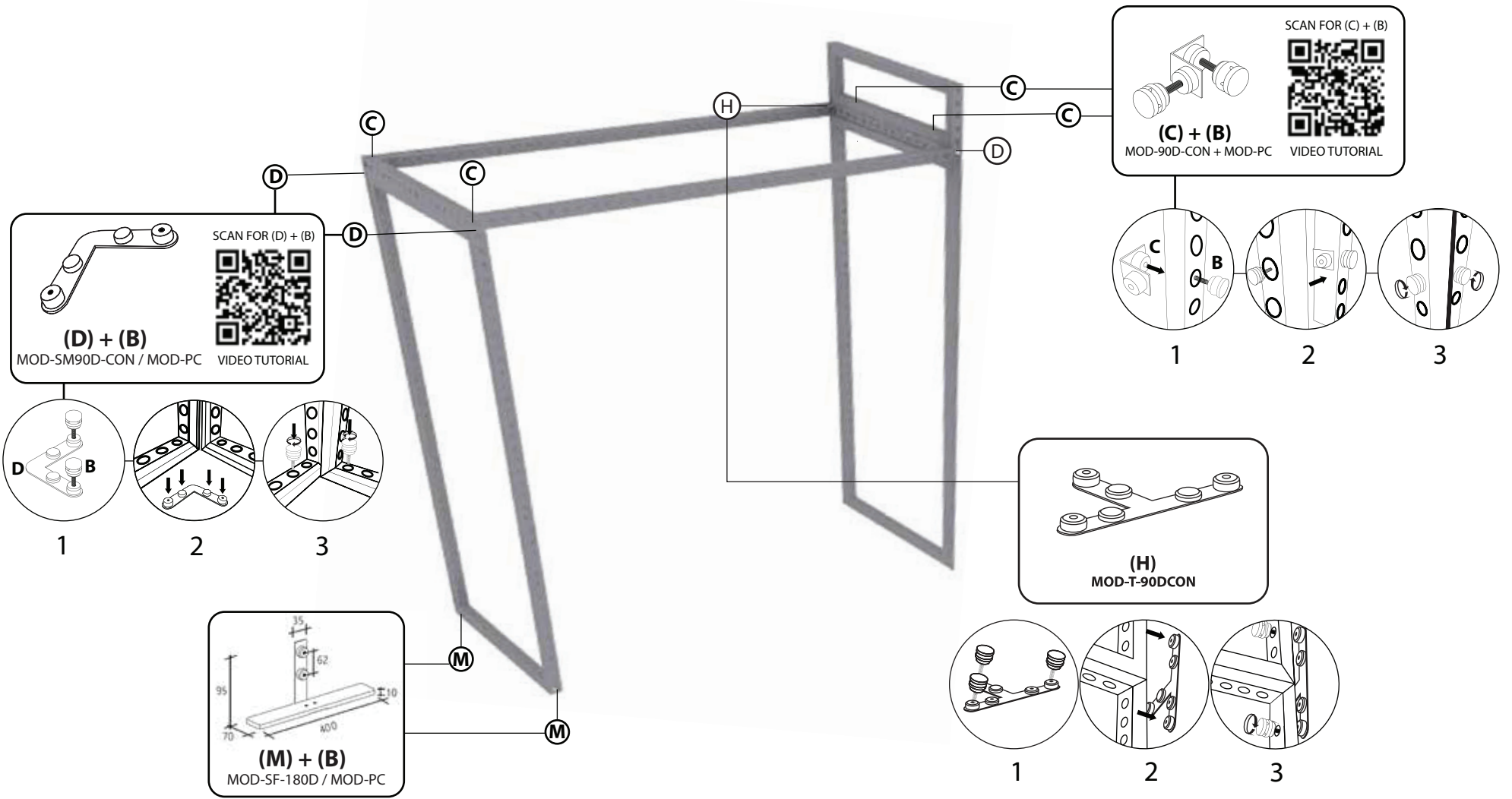
MOD-T90D-CON
Qty.1



MOD-FRM-310x992
Qty.1

Arch and Header

- Use letter in REF column and parts list for reference.

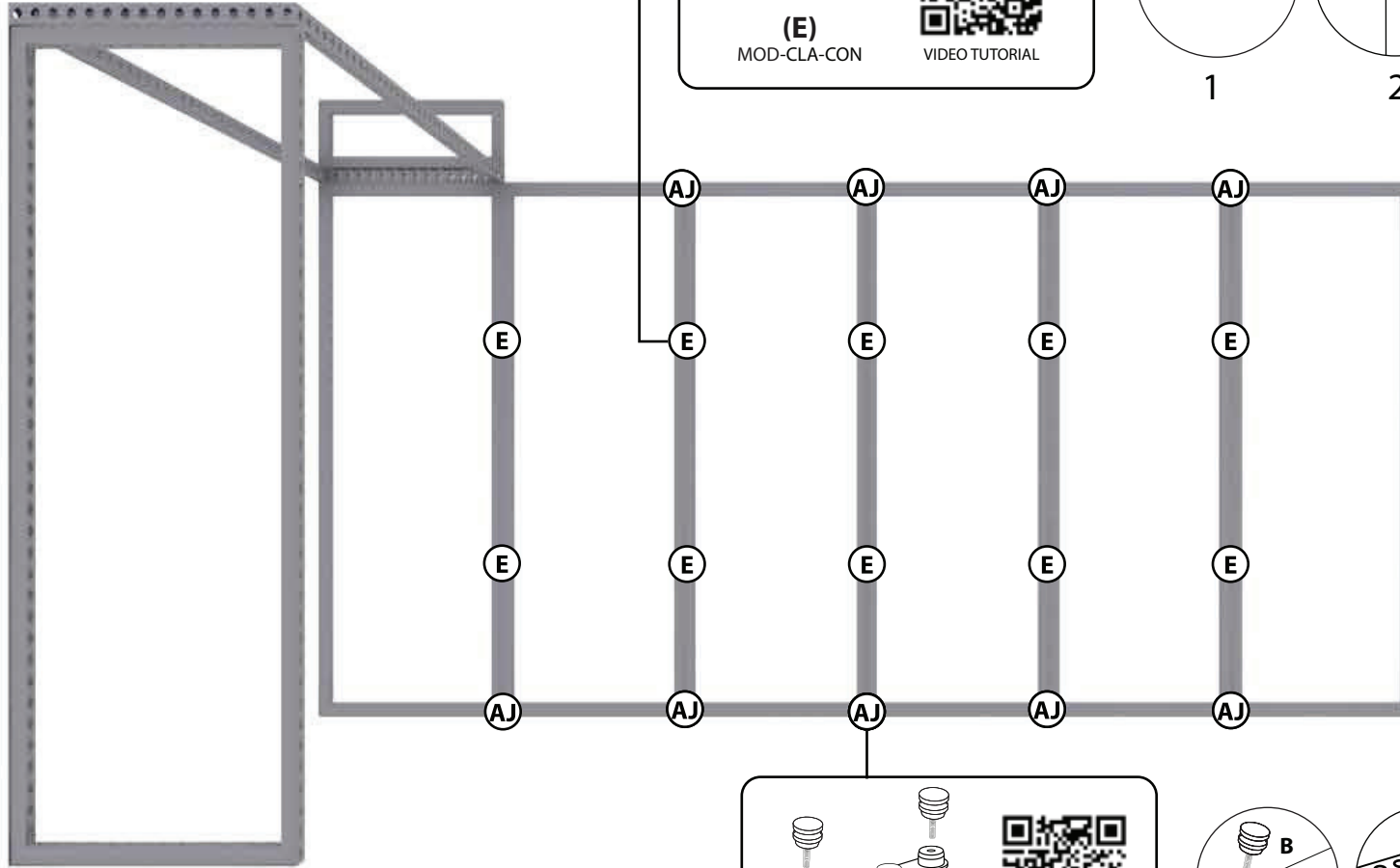


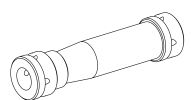
ARCH / BACKWALL PARTS LIST


REF		PART NO.	DESCRIPTION
1	8	MOD-FRM-992x2418	Straight Frame, Corner Screw Connect 992mm x 2418mm
E	12	MOD-CLA-CON	Clamp Connector
C	3	MOD-90D-CON	Middle or Center 90° Connector
AJ	9	MOD-180D-CON	180 Degree Connector
D	2	MOD-SM90D-CON	Top/Bottom/Outside 90° Connector
B	39	MOD-PC	Pin Connector
M	2	MOD-SF-180D	Side Foot 180 Degrees
H	1	MOD-T-90DCON	Square Foot (Double Sided)

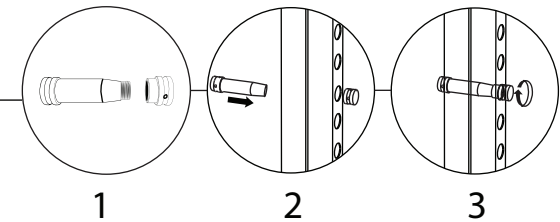
Backwall

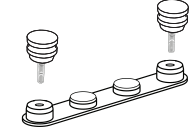
- Use letter in REF column and parts list for reference.




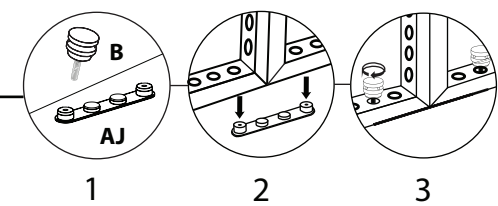

(E)
MOD-CLA-CON

SCAN FOR (E)

VIDEO TUTORIAL

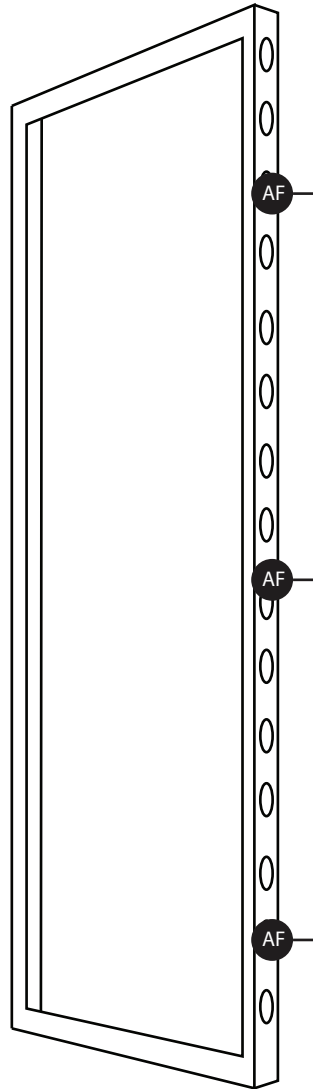



(AJ) + (B)
MOD-180D-CON / MOD-PC

SCAN FOR (AJ) + (B)

VIDEO TUTORIAL



Cover Profiles



REF (AF) / (AC & AE)
 MOD-CC / Cover profile
(2) clips for 992 or shorter. (3) clips for 1488 or higher

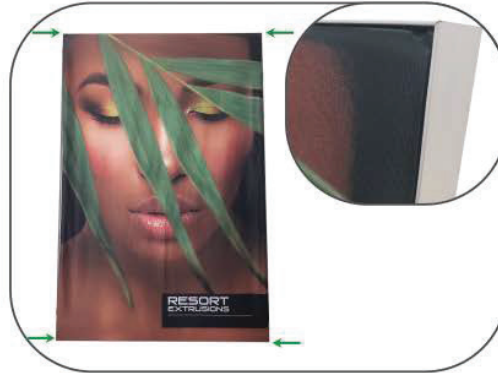
PARTS LIST

AC	6	MOD-CP-992x2418	Cover Profile for Frame 992x2418. Flat Model. Anodized
AE	2	MOD-CP-3100	12" Cover Profile, Bar Per 3100mm Cover Profile. Flat Model. Anodized
AF	22	MOD-CC	Clip Connector Cover Connects Cover Profile

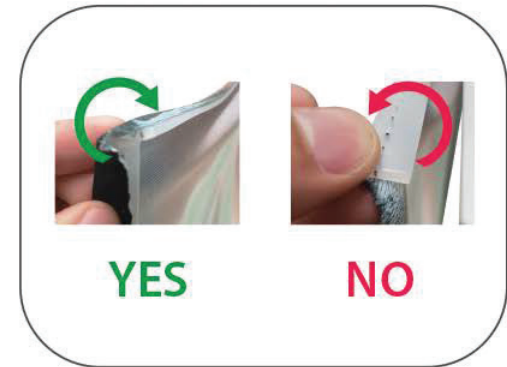
Graphic Fitment Guide



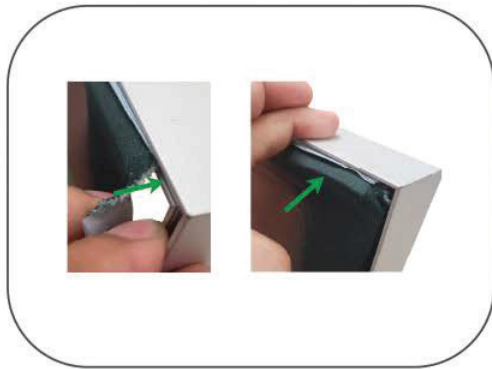
Place graphic over the front of the frame.



Begin inserting SEG beading at each corner.



Insert the silicone beading with the fabric folded over. The silicone beading should not be exposed.



Using your fingers, push both fabric and silicone beading completely into the extrusions channel.



Continue to push in the remaining silicone beading on each side.



Check the perimeter of the frame for any excess beading that hasn't been pushed in. Graphic should be taut.