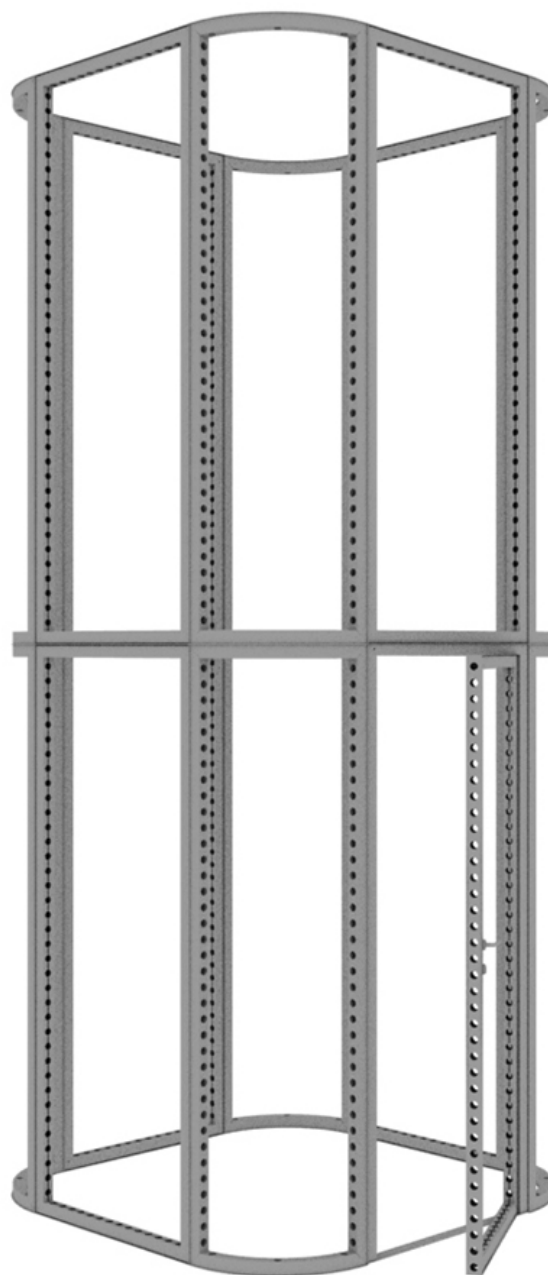


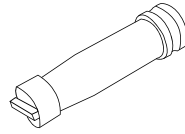
## MODCO 7C - Tower



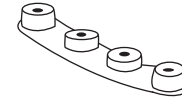
## Parts / Frames



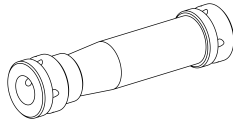
**Pin Connector**  
MOD-PC  
Qty.16



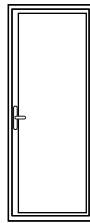
**Door Clamp Connector**  
MOD-DCC-180D Qty.6



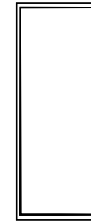
**180° Curved Connector**  
MOD-CRV-180DCL Qty.8



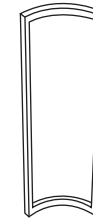
**Clamp Connector**  
MOD-CLA-CON  
Qty.42



**95" Door**  
MOD-DSWL-992x2418  
Qty.1



**992 x 2418**  
MOD-FRM-992x2418  
Qty.7



**774 x 2418 Curved**  
MOD-CRVFRM-774x992  
Qty.8

### Parts List Key

#### FRAMES

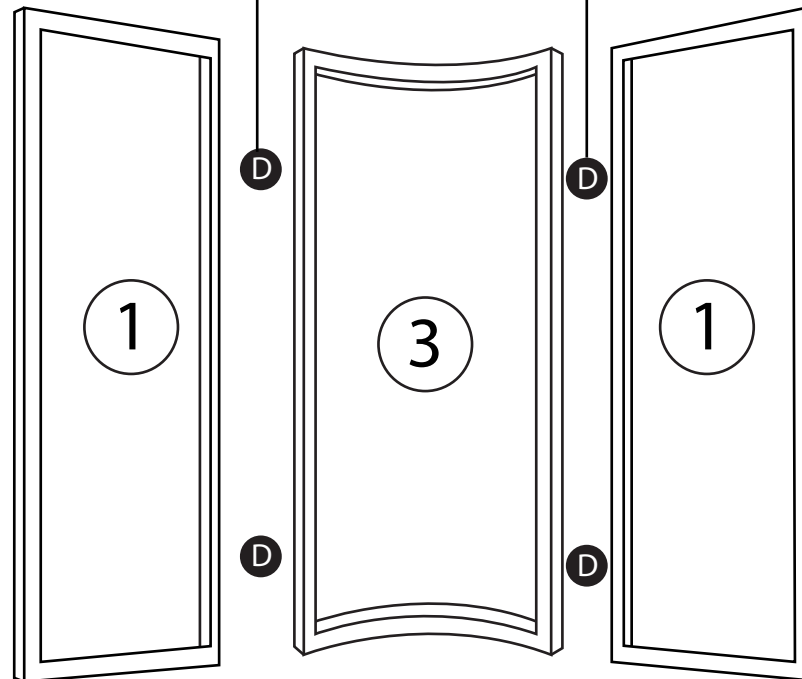
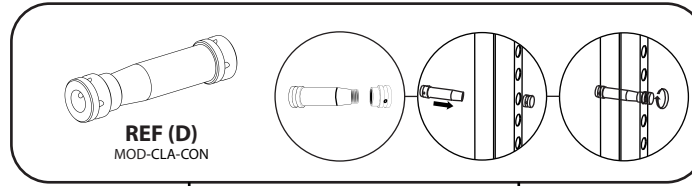
REF #	QTY	PART NO.	DESCRIPTION
1	7	MOD-FRM-992x2418	Straight Frame, Corner Screw Connect 992mm x 2418mm
2	1	MOD-DSWL-992x2418	Door Set w/ Lock 992mm x 2418mm
3	8	MOD-CRVFRM-774x2418	1/4 Curved Frame, welded 774mm x 2418mm

#### CONNECTORS, ACCESSORIES & COVER PROFILES

REF #	QTY	PART NO.	DESCRIPTION
B	16	MOD-PC	Pin Connector
D	42	MOD-CLA-CON	Clamp Connector
E	6	MOD-DCC-180D	Door Clamp Connector, 180 Degrees (Connect to Wall Frame)
G	56	MOD-FP	Modco Frame Protector
I	8	MOD-CRV-180DCL	Modco Curve 180 Degree Connector (Left)

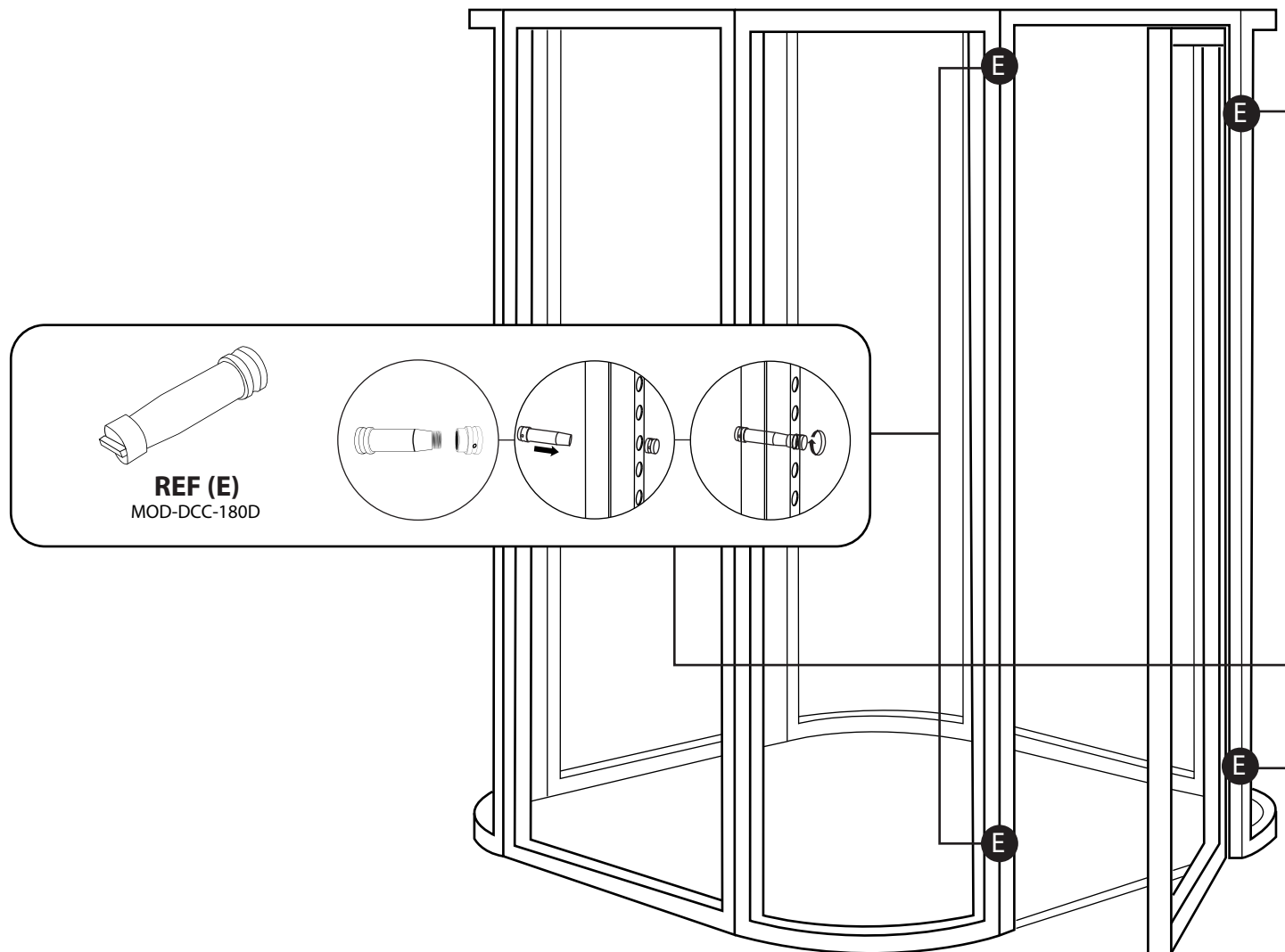
# MODCO 7C - Tower

- Continue around to complete perimeter

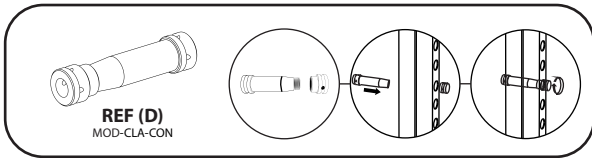
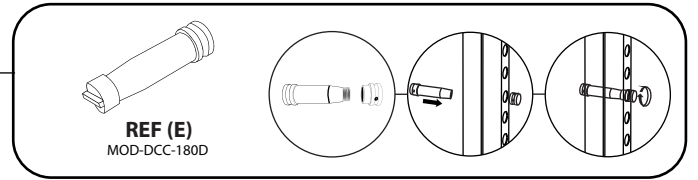
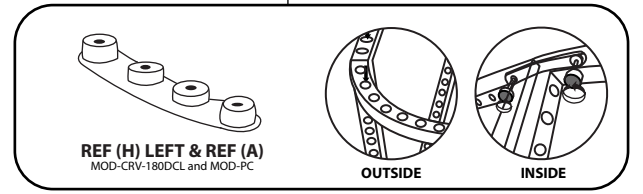
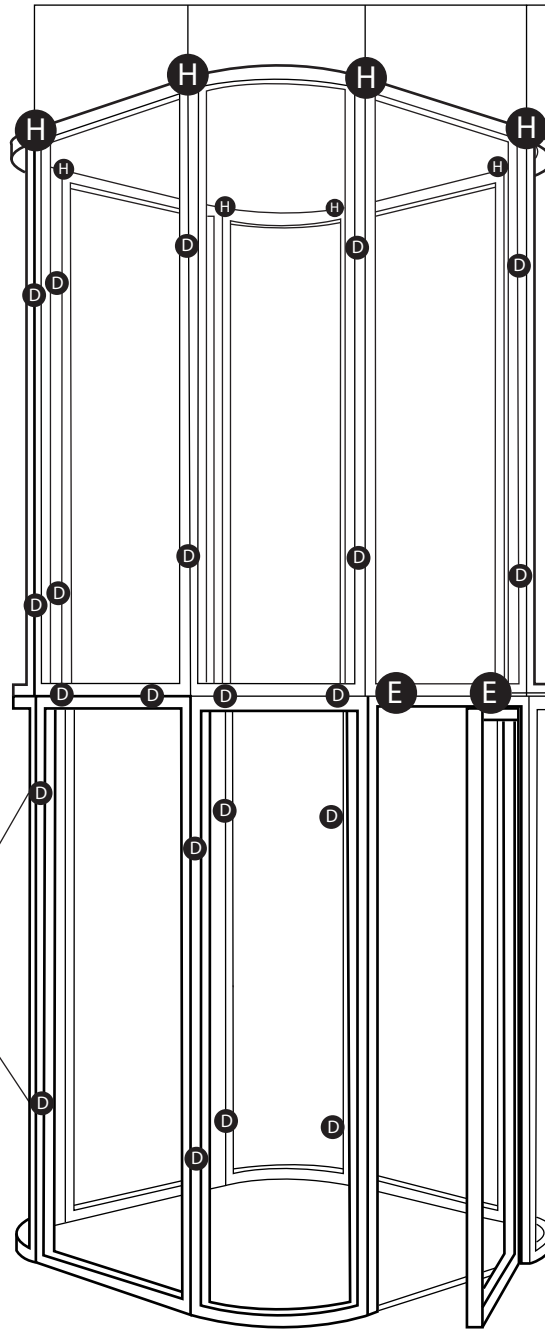


# MODCO 7C - Tower

- Respective to Door only



# MODCO 7C - Tower



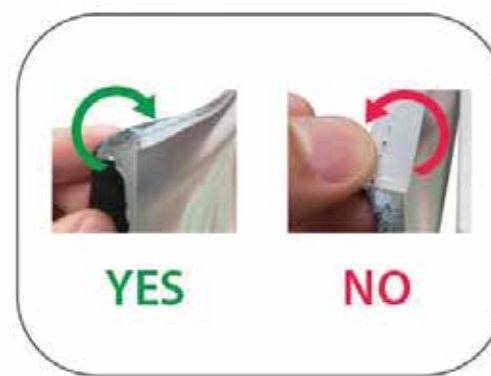
# GRAPHIC INSTALL



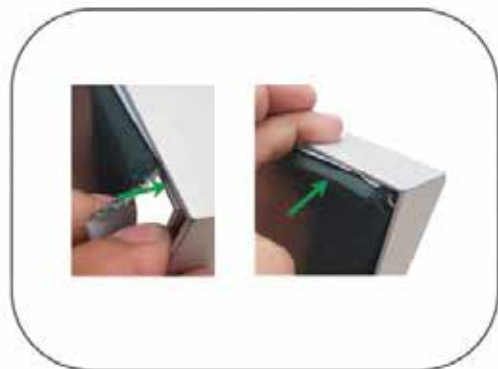
Place graphic over the front of the frame.



Begin inserting SEG beading at each corner.



Insert the silicone beading with the fabric folded over. The silicone beading should not be exposed.



Using your fingers, push both fabric and silicone beading completely into the extrusions channel.



Continue to push in the remaining silicone beading on each side.



Check the perimeter of the frame for any excess beading that hasn't been pushed in. Graphic should be taut.