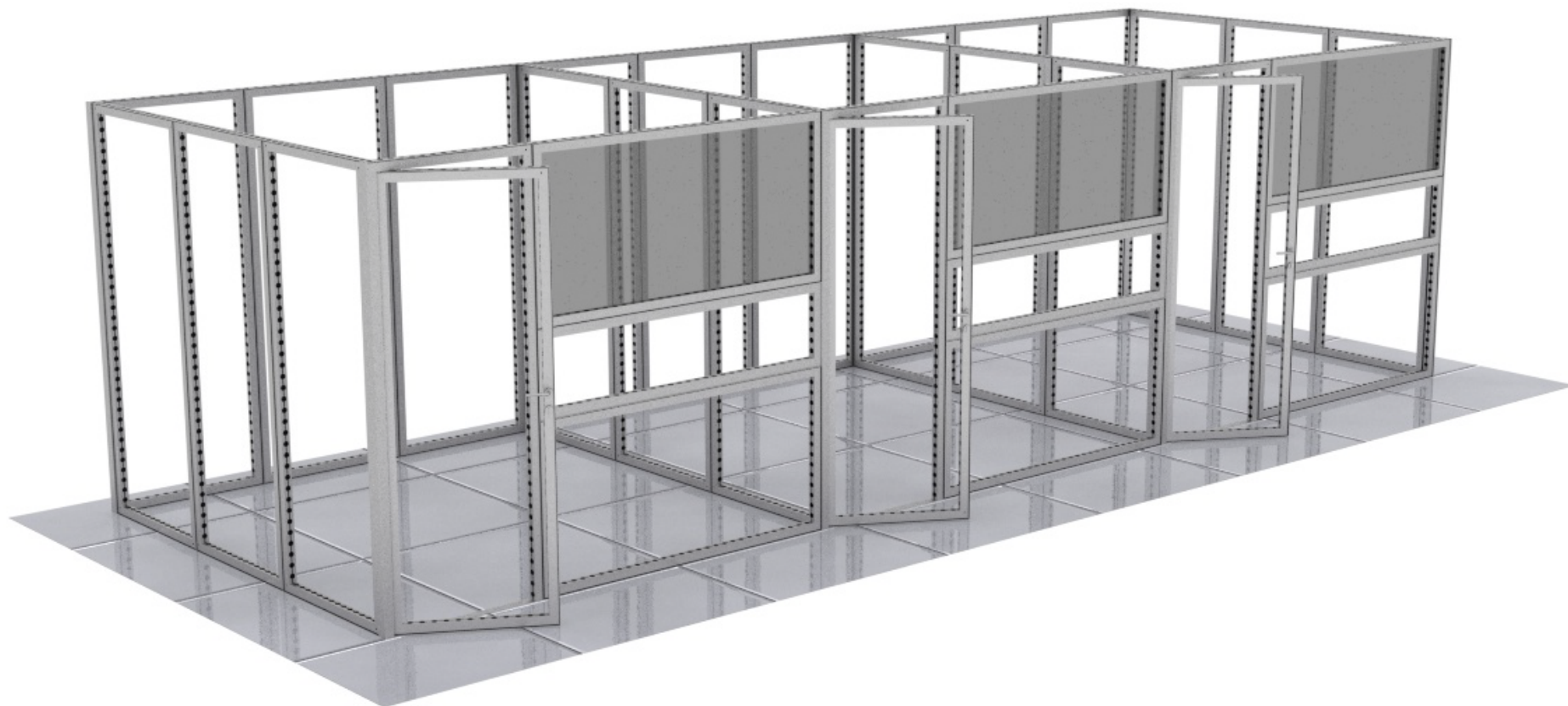
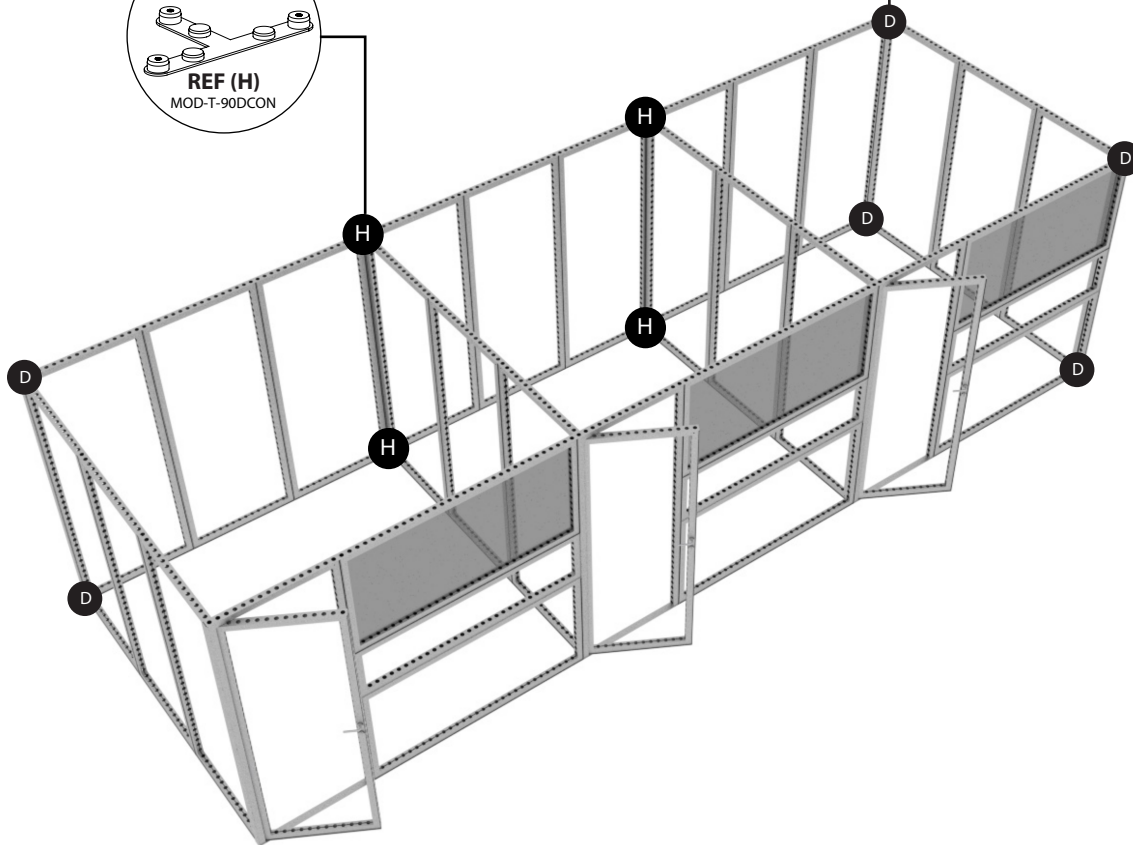
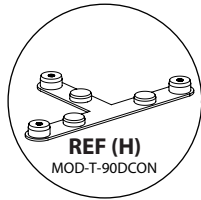
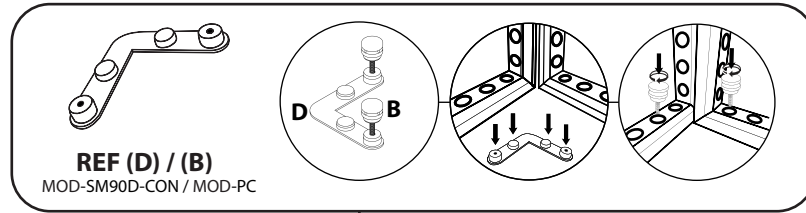


MODCO 18 - 30x10

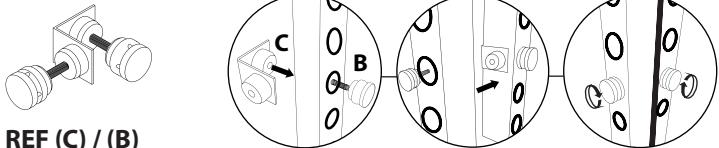


MODCO 18 - 30x10

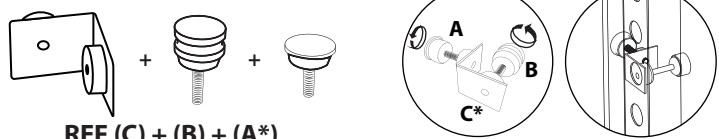
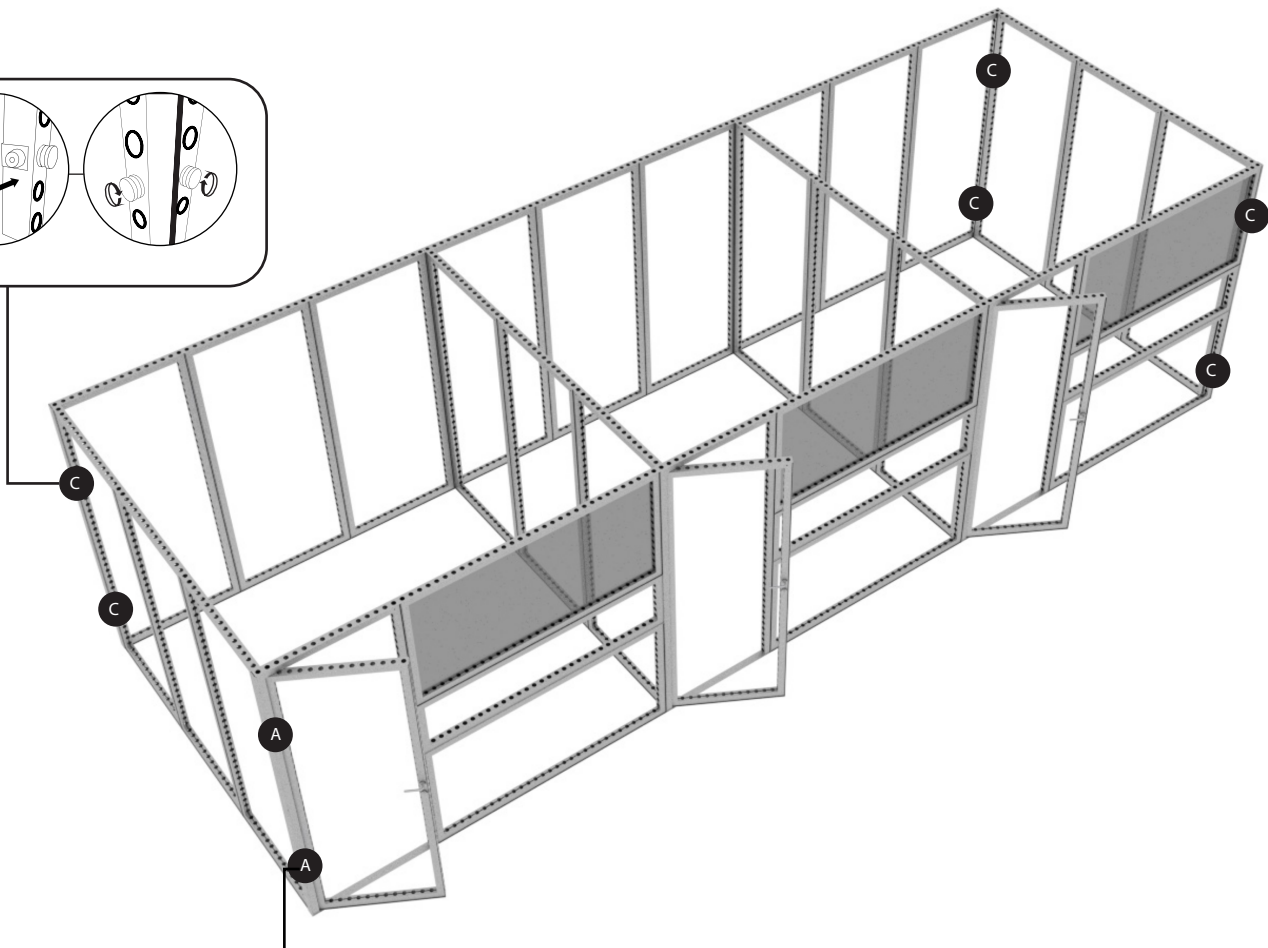


PARTS LIST			
REF	QTY	PART NO.	DESCRIPTION
1	21	MOD-FRM-992x2418	Straight Frame, Corner Screw Connect 992mm x 2418mm
2	3	MOD-DSWL-992x2418	Door Set w/ Lock 992mm x 2418mm
3	6	MOD-FRM-992x1984	Straight Frame, Corner Screw Connect 992mm x 1984mm
7	3	MOD-FRM-310x1984	Straight Frame, Corner Screw Connect 310mm x 1984mm
B	115	MOD-PC	Pin Connector
C	16	MOD-90D-CON	90° Connector
D	7	MOD-SM90D-CON	90° Connector
E	44	MOD-CLA-CON	Clamp Connector
AJ	31	MOD-180D-CON	180 Degree Connector
A	12	MOD-PCWP-A	Pin Connector for Door Jamb
H	6	MOD-T-90DCON	T Shape 3 Way 90 Degree Connector Used per Set of 2pcs
AA	10	MOD-DCC-180D	Door Clamp Connector, 180 Degrees (Connect to Wall Frame)
--	3	3/8 P95 ACRYLIC	ACRC P95 0000 .375x48x96 PS ACRYLIC CAST MATTE CLEAR
AO	12	MOD-PNL-CON-B	Modco Panel fixing connector B

MODCO 18 - 30x10

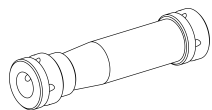


REF (C) / (B)
MOD-90D-CON + MOD-PC

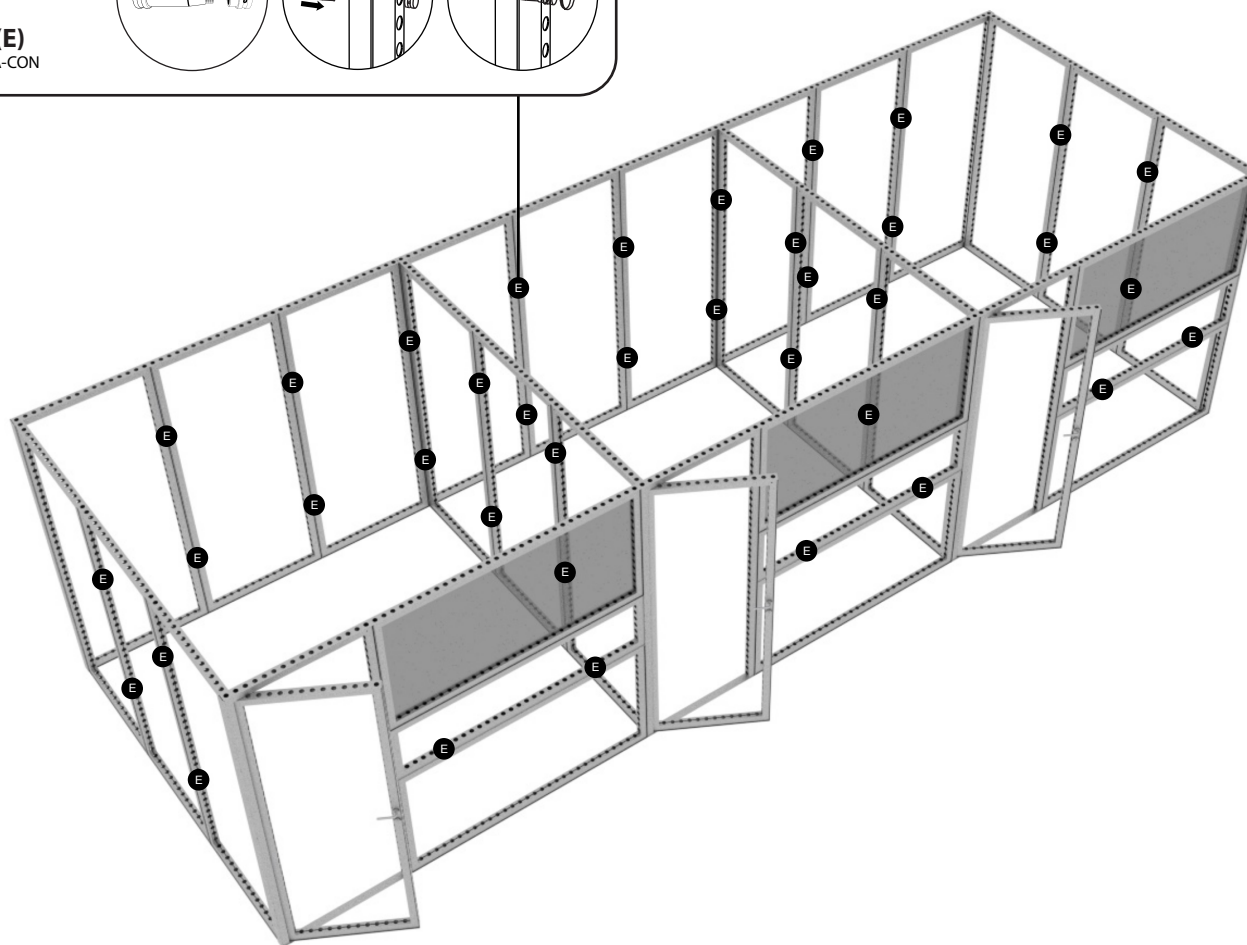
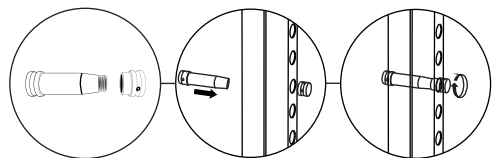


REF (C) + (B) + (A*)
(A*) MOD-PCWP-A will be inside of door hinge

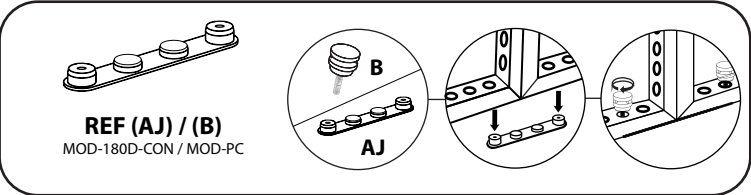
MODCO 18 - 30x10



REF (E)
MOD-CLA-CON

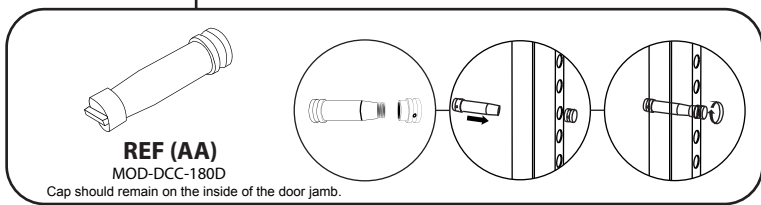
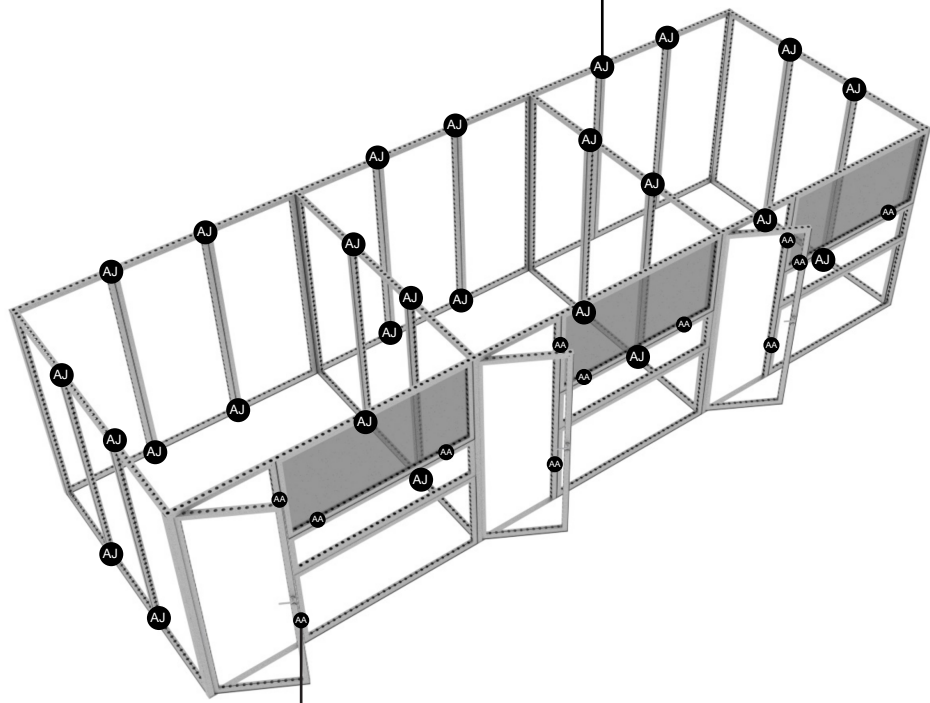


MODCO 18 - 30x10



REF (AJ) / (B)
MOD-180D-CON / MOD-PC

The diagram shows a row of four cylindrical components. To the right, three circular insets illustrate the installation: the first shows a component labeled 'B' being inserted into a component labeled 'AJ'; the second shows the component being pushed into a slot in a metal frame; the third shows the component fully seated in the slot.

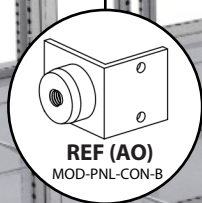
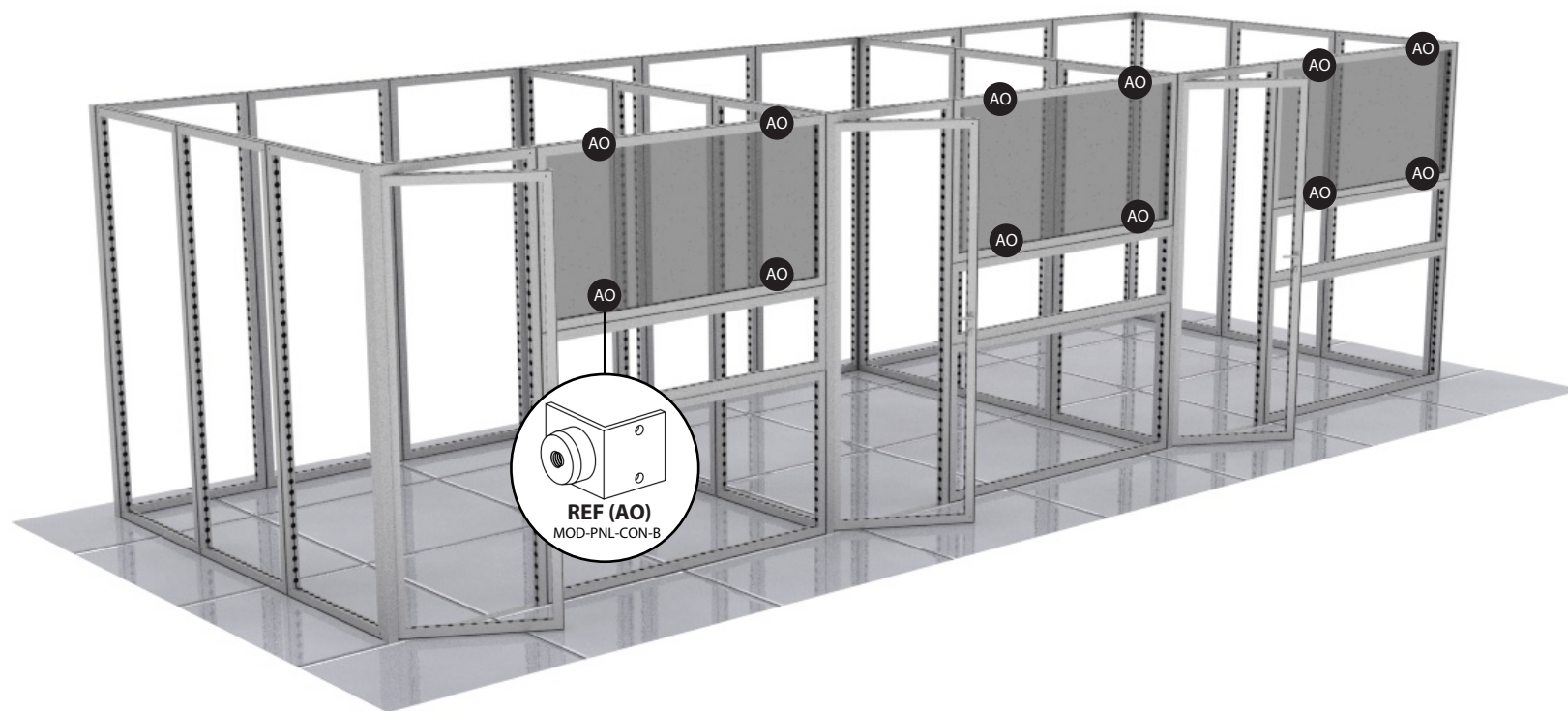


REF (AA)
MOD-DCC-180D

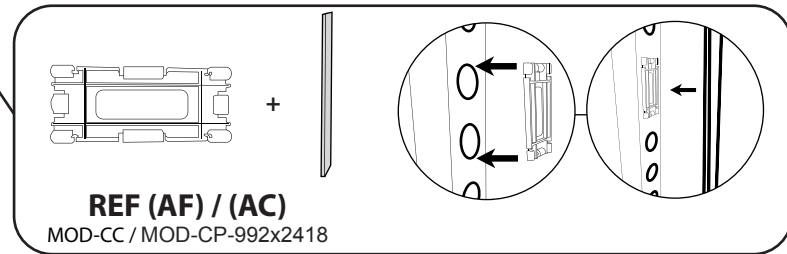
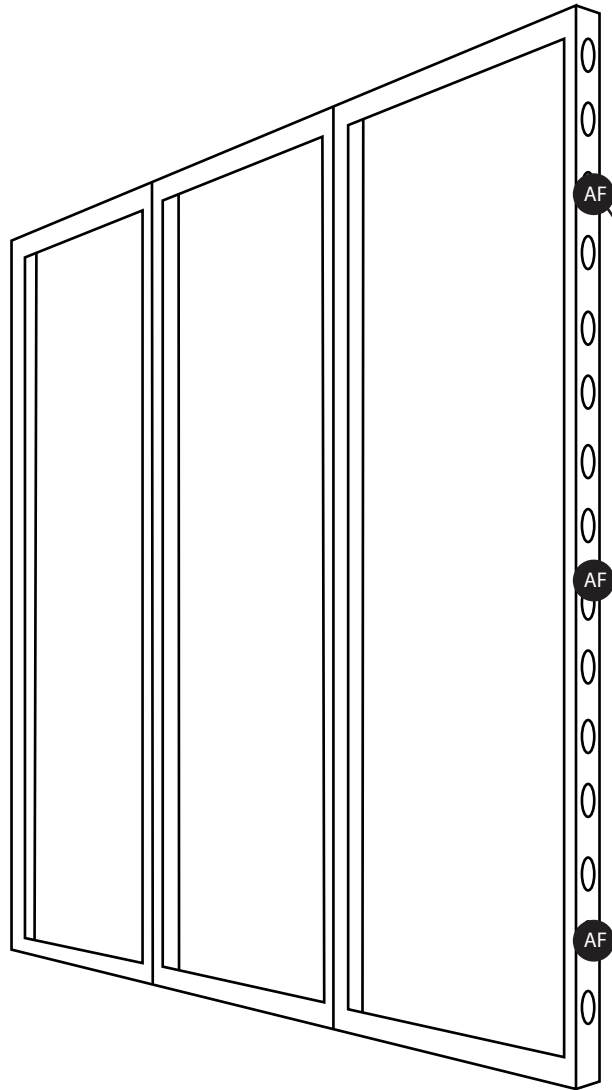
Cap should remain on the inside of the door jamb.

The diagram shows a cylindrical door jamb component with a cap. To the right, three circular insets illustrate the installation: the first shows the component being inserted into a slot in a vertical metal bar; the second shows the component being pushed into the slot; the third shows the component fully seated in the slot.

MODCO 18 - 30x10



MODCO 18 - 30x10



COVER PROFILES & ACCESSORIES

REF	QTY	PART NO.	DESCRIPTION
AC	4	MOD-CP-992x2418	Cover Profile for Frame 992x2418. Flat Model. Anodized
AF	12	MOD-CC	Clip Connector Cover Connects Cover Profile
AL	132	MOD-FP	Modco Frame Protector

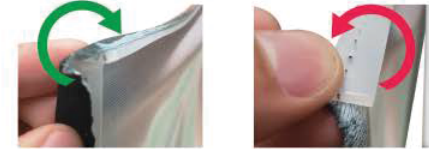
GRAPHIC INSTALL



Place graphic over the front of the frame.



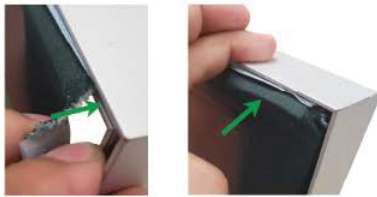
Begin inserting SEG beading at each corner.



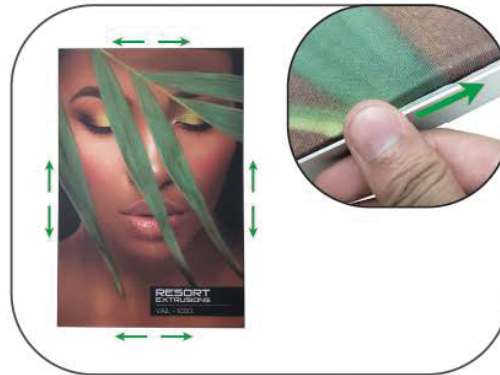
YES

NO

Insert the silicone beading with the fabric folded over. The silicone beading should not be exposed.



Using your fingers, push both fabric and silicone beading completely into the extrusions channel.



Continue to push in the remaining silicone beading on each side.



Check the perimeter of the frame for any excess beading that hasn't been pushed in. Graphic should be taut.