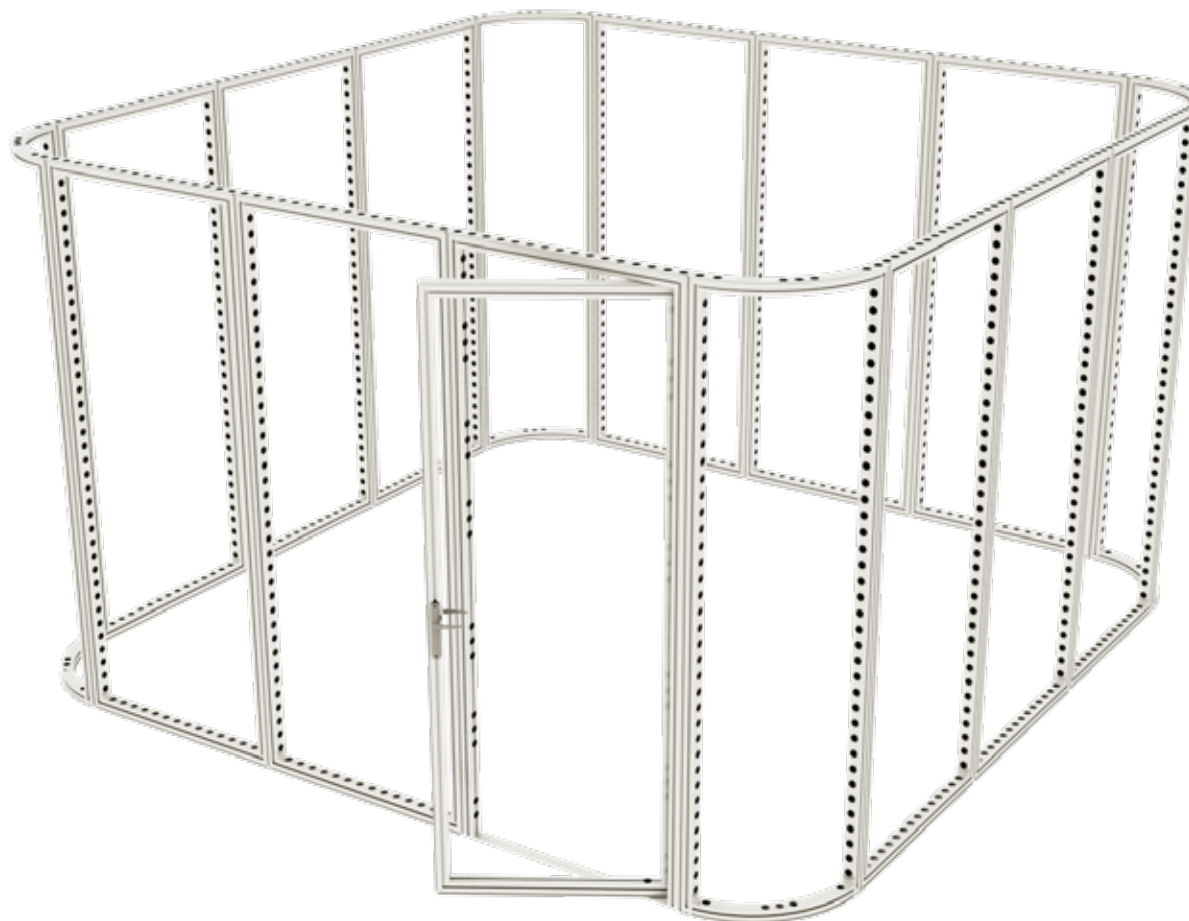
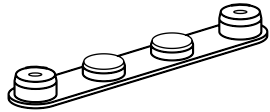


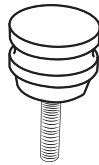
MODCO 6A - 15x15



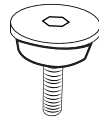
Parts / Frames



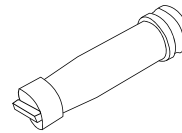
180° Connector
MOD-180D-CON
Qty.28



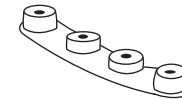
Pin Connector
MOD-PC
Qty.61



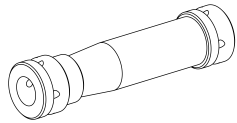
Door Pin Connector
MOD-PCWP-A
Qty.2



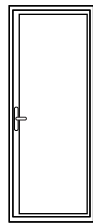
Door Clamp Connector
MOD-DCC-180D Qty.4



180° Curved Connector
MOD-CRV-180DCL Qty.8
MOD-CRV-180DCR Qty.7



Clamp Connector
MOD-CLA-CON
Qty.28



95" Door
MOD-DSWL-992x2418
Qty.1



992 x 2418
MOD-FRM-992x2418
Qty.11



774 x 2418 Curved
MOD-CRVFRM-774x992
Qty.4

Parts List Key

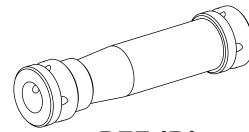
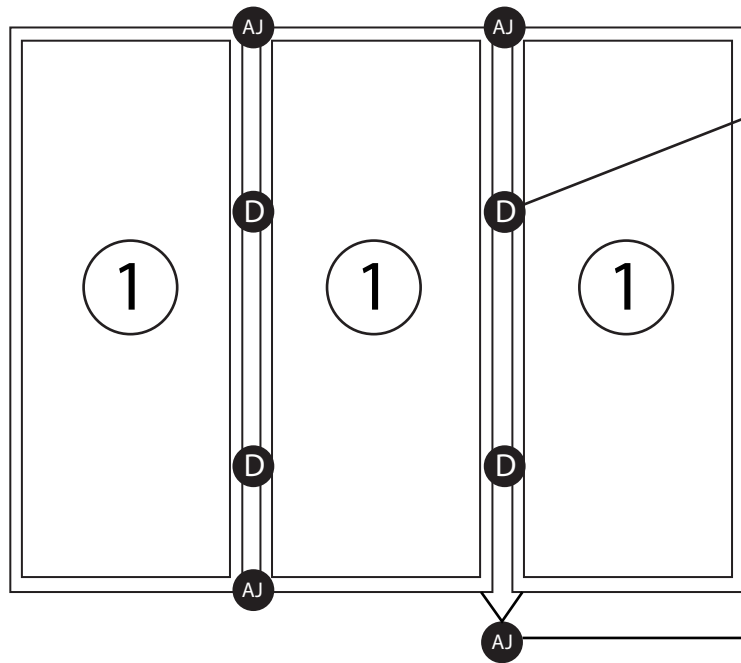
FRAMES

REF #	QTY	PART NO.	DESCRIPTION
1	11	MOD-FRM-992x2418	Straight Frame, Corner Screw Connect 992mm x 2418mm
2	1	MOD-DSWL-992x2418	Door Set w/ Lock 992mm x 2418mm
3	4	MOD-CRVFRM-774x2418	1/4 Curved Frame, welded 774mm x 2418mm

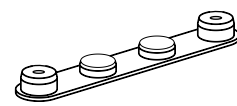
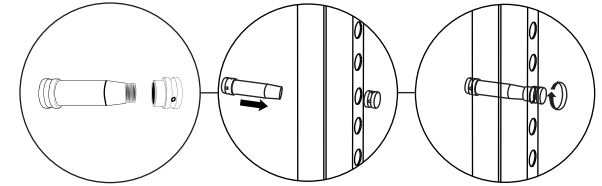
CONNECTORS, ACCESSORIES & COVER PROFILES

REF #	QTY	PART NO.	DESCRIPTION
A	2	MOD-PCWP-A	Pin Connector for Door Jamb
B	61	MOD-PC	Pin Connector
D	28	MOD-CLA-CON	Clamp Connector
E	4	MOD-DCC-180D	Door Clamp Connector, 180 Degrees (Connect to Wall Frame)
AJ	16	MOD-180D-CON	180 Degree Connector
G	48	MOD-FP	Modco Frame Protector
H	7	MOD-CRV-180DCR	Modco Curve 180 Degree Connector (Right)
I	8	MOD-CRV-180DCL	Modco Curve 180 Degree Connector (Left)

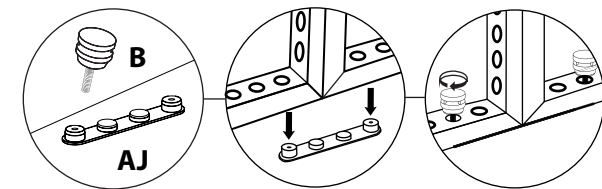
MODCO 6A - 15x15



REF (D)
MOD-CLA-CON

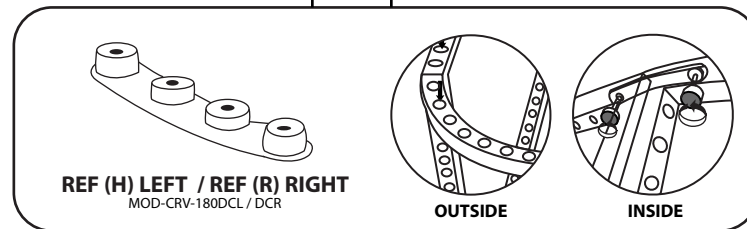
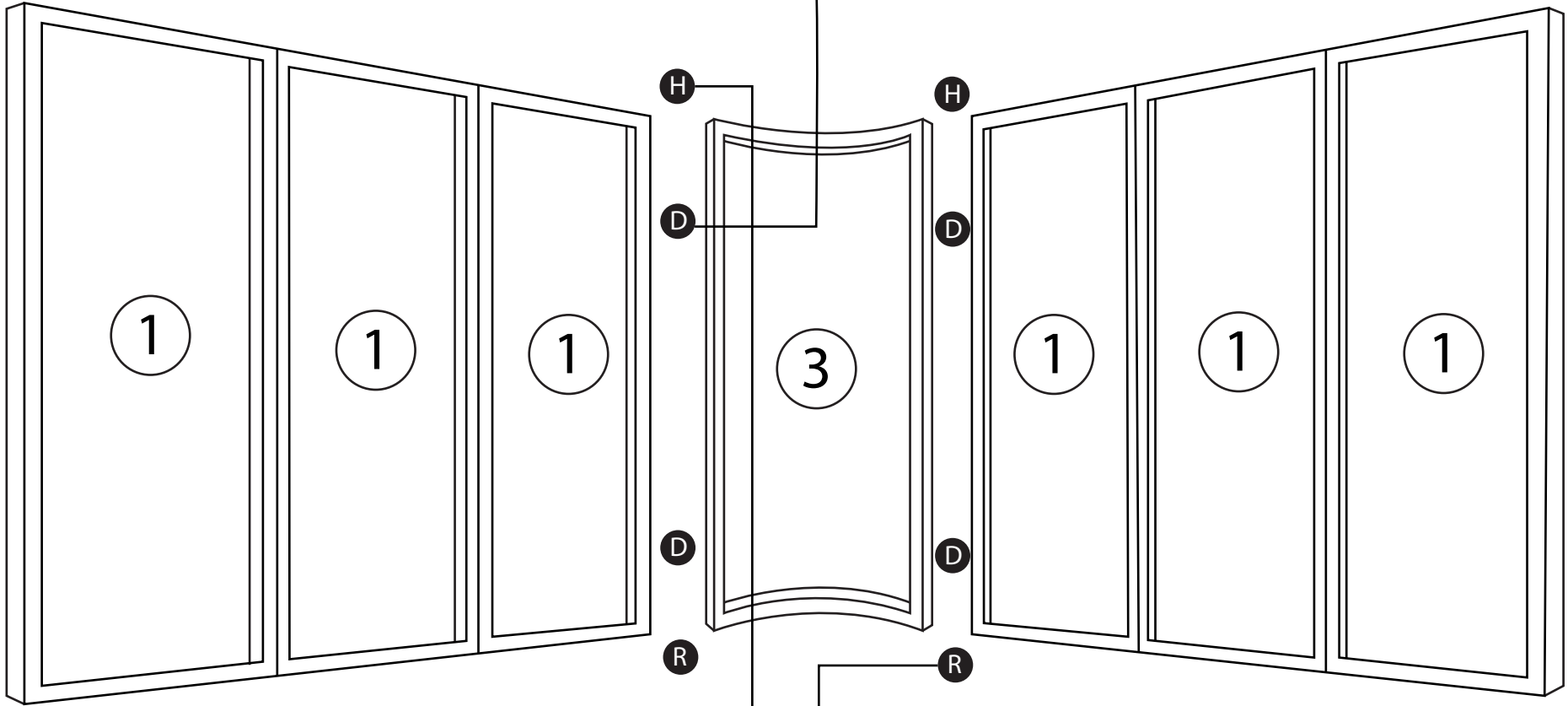
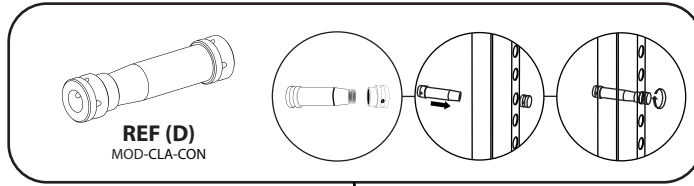


REF (AJ) / (B)
MOD-180D-CON / MOD-PC



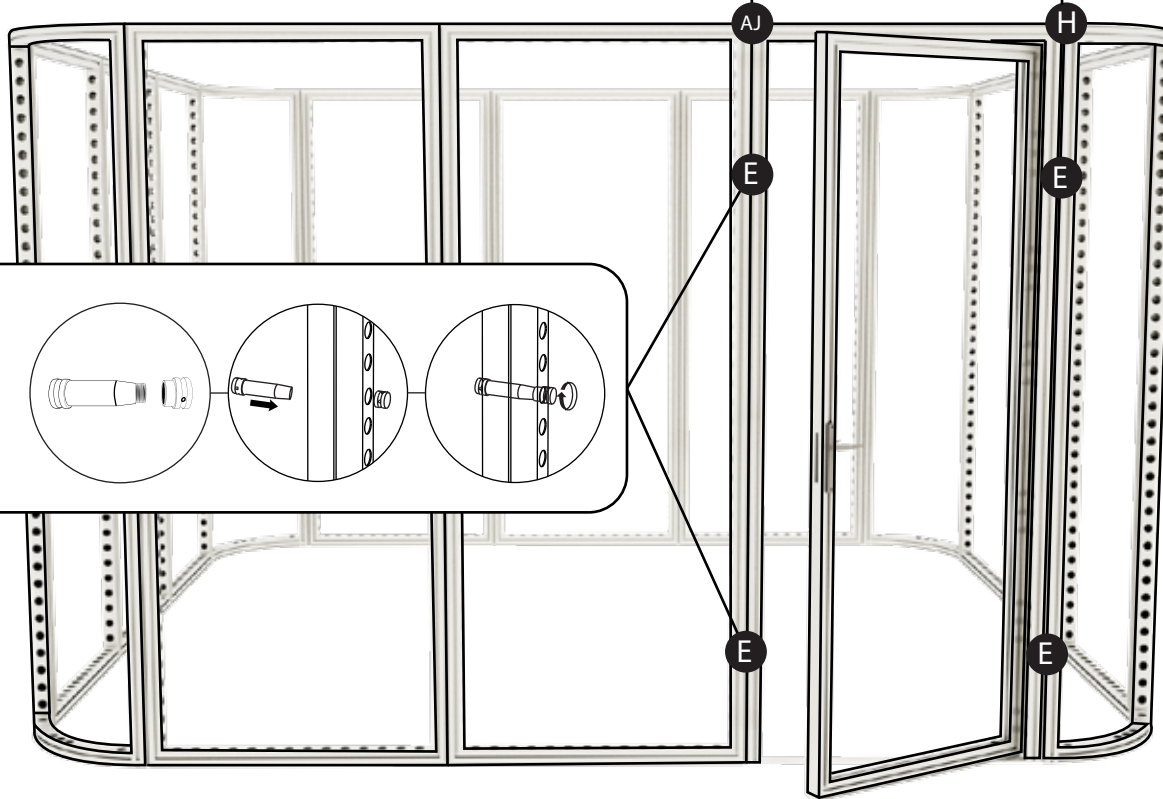
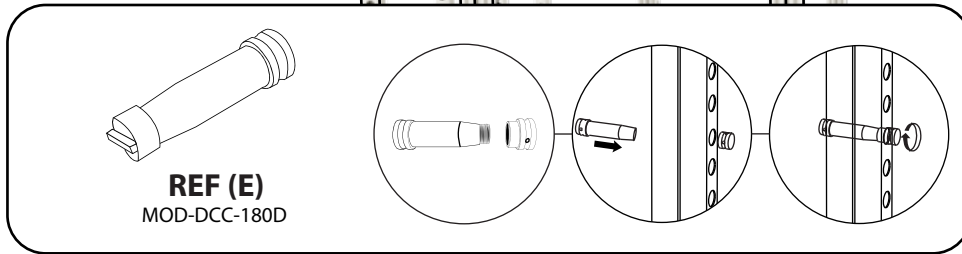
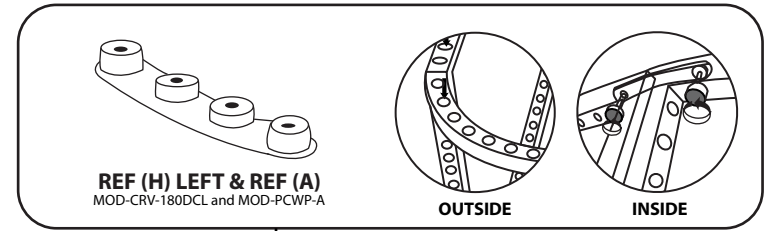
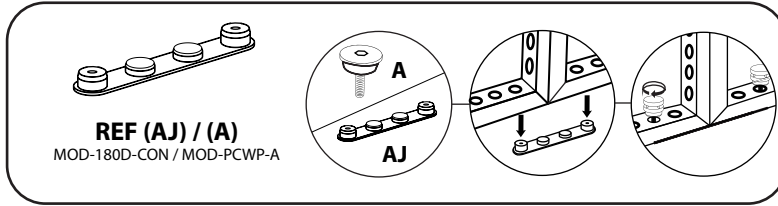
MODCO 6A - 15x15

- Continue using the curved frame 'REF 3' for each corner.



MODCO 6A - 15x15

- Respective to Door corner only



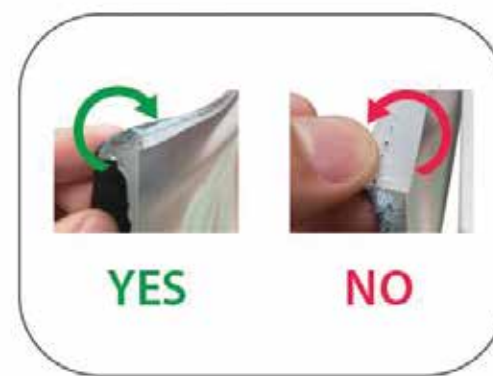
GRAPHIC INSTALL



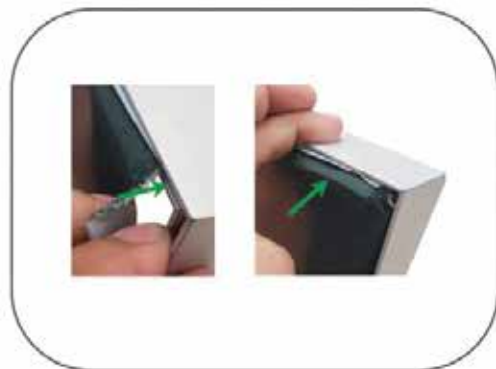
Place graphic over the front of the frame.



Begin inserting SEG beading at each corner.



Insert the silicone beading with the fabric folded over. The silicone beading should not be exposed.



Using your fingers, push both fabric and silicone beading completely into the extrusions channel.



Continue to push in the remaining silicone beading on each side.



Check the perimeter of the frame for any excess beading that hasn't been pushed in. Graphic should be taut.