

TAHOE TWISTLOCK W

TAHOE MODULAR DISPLAYS

PRODUCT CODE: TTLW



On frame On graphic



PRODUCT DESCRIPTION

Introducing our New 10 ft. Tahoe Twistlock W—with curved acrylic side panels that complement the curves of the wave top, curvy acrylic header and rounded tabletop and display feet. There is also a middle beam and extra foot that offers you both a 2-graphic option and an LCD monitor option (Monitor Bracket is an accessory upgrade).

The Tahoe Twistlock W is completely toolless. Simply attach hardware connectors to frame by sliding into extrusion grooves and secure into place by twisting knobs. Tubes connect with snap buttons. SEG graphics are placed by hand into extrusion grooves.

DISPLAY DIMENSION	117.3" W x 96" H
GRAPHIC DIMENSIONS	80.5" W x 80" H (Left Side Graphic) 40" W x 80" H (Right Side Graphic)

GRAPHIC MATERIAL

Stretch Fabric

GRAPHIC FINISHING

The graphic will be printed on Satin Fabric. Silicone beading will be sewn to the edge of the graphic for graphic installation. The silicone beading will not be visible once the graphic is installed into the frame.

DISPLAY CONSTRUCTION

Aluminum Frame Construction	Back Wall Hardware
Arch Canopy Frame (2" Aluminum Tubing)	Frosted Plex Header & Wings

SHIPPING WEIGHTS & DIMENSIONS

Shipping Weight	140 lbs (frame only) 150 lbs (frame with graphics)
Shipping Dimensions	53" H x 20.5" W x 17" D

LARGE QUANTITY FREIGHT

Freight Shipping	8 boxes per 48" L x 40" W x 68" H skids
Freight Weight	2240 lbs (frame only) 2400 (frame with graphics)

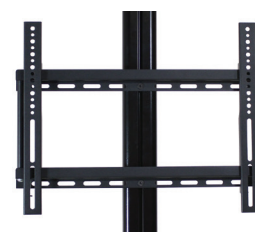
GRAPHIC TURN AROUND TIME

2 business days after proof approval

AVAILABLE ACCESSORIES

Acrylic Side Panels - Print Upgrade	Acrylic Header - Print Upgrade
T135 LED Lights	Silver Lights LED
Black Lights LED	Monitor Bracket - 22"- 42" LCD size

SHELF WEIGHT CAPACITY 30 lbs



Twistlock Feature

Wheeled Case (included)

Optional TV Monitor Mount*

*Please Note: LCD monitor not included.

TAHOE TWISTLOCK W

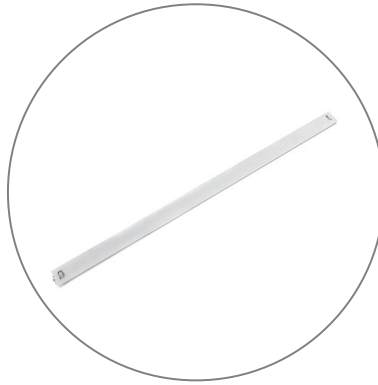
TAHOE MODULAR DISPLAYS

PRODUCT CODE: TTLW

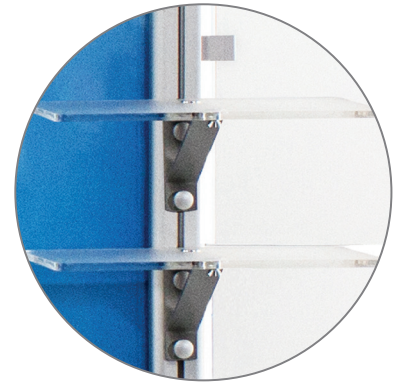
PARTS LIST



Qty 6 - Vertical Twist Lock Extrusions



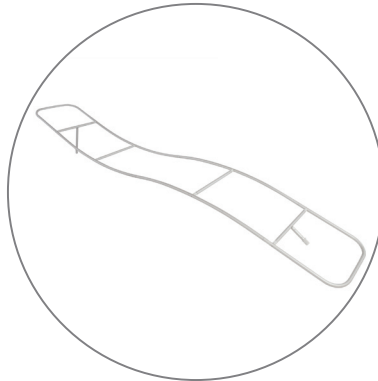
Qty 4 - Horizontal Extrusions



Qty 3 - Small Acrylic Shelves with Brackets



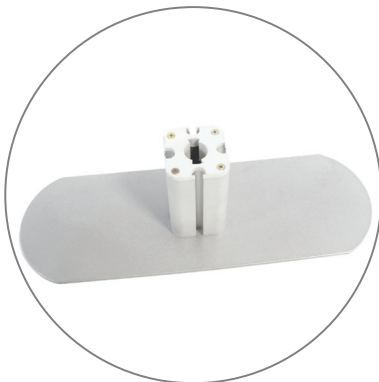
Qty 1 - Acrylic table with Brackets



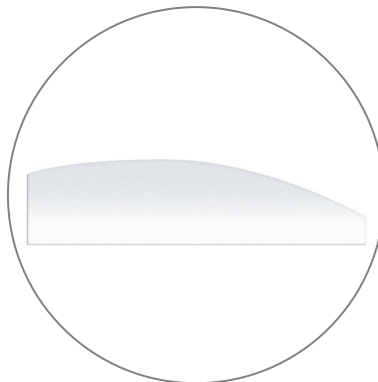
Qty 1 - Canopy Frame (w/ Fabric Canopy)



Qty 4 - Acrylic Wings with Brackets



Qty 3 - Feet



Qty 1 - Acrylic Header with Brackets



Qty 1 - Hard Case