

10FT EZ TOWER

EZ TUBE FABRIC DISPLAYS

PRODUCT CODE: EZTWR10G



PRODUCT DESCRIPTION

Introducing our newest EZ Tube Display, the EZ Tower! This display is very light-weight and is an excellent attention grabber due to its sheer size. The aluminum frame is completely tool free and easily assembled by snapping all of the individual tubes together. The graphic slides over the frame, pulled down until taut, and then is zipped closed. A durable case with wheels for easy transport is included. Grab all the attention at your next show with this massive display!

DISPLAY DIMENSIONS	36"W x 120"H x 36"D
--------------------	---------------------

GRAPHIC SIZE	36"W x 120"H (4 prints total)
--------------	-------------------------------

GRAPHIC MATERIAL

Stretch Fabric

GRAPHIC FINISHING

Dye Sublimation with Pillowcase Finishing

DISPLAY CONSTRUCTION

Aluminum Frame (38mm diameter tubing)

SHIPPING WEIGHTS & DIMENSIONS

Shipping Weight	34 lbs (stand only)
	41 lbs (frame and graphic)

Shipping Dimensions	53"L x 9.75"W x 12.5"H
---------------------	------------------------

LARGE QUANTITY FREIGHT

Freight Shipping	20 boxes per 48"L x 40"W x 44"H skid
------------------	--------------------------------------

Freight Weight	725 lbs (frame only)
	865 lbs (frame & graphic)

GRAPHIC TURN AROUND TIME

2 business days after proof approval

AVAILABILITY	CA
--------------	----



Silverbag Case



1.5" (38mm) dia.
Frame Tubing



10FT EZ TOWER

EZ TUBE FABRIC DISPLAYS
PRODUCT CODE: EZTWR10G

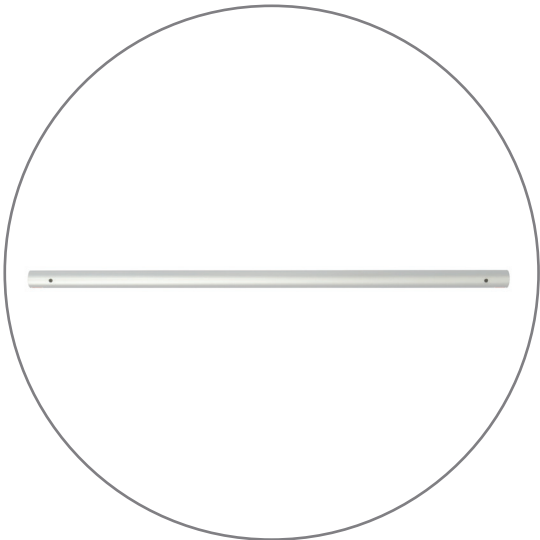
PARTS LIST



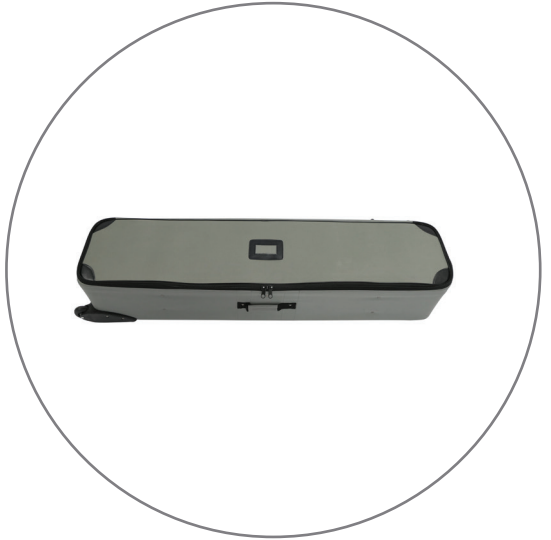
Qty.4 - Vertical
Sectional Tubing



Qty.8 - Angle Connector



Qty.12 - Horizontal Tubing



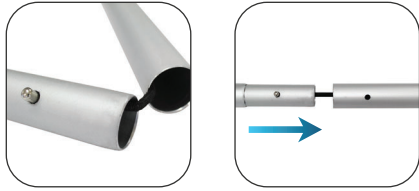
Qty.1 - Silverbag

10FT EZ TOWER

EZ TUBE FABRIC DISPLAYS
PRODUCT CODE: EZTWR10G

SETUP INSTRUCTIONS

A. Vertical Tubing



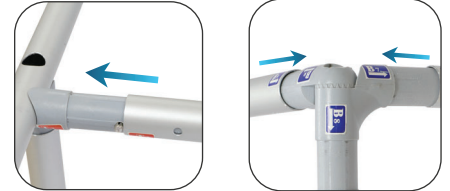
The vertical tubes are multi-piece units, connected with an internal bungee cord. Push down on the button and insert into the receiving tube until the button snaps in place.

B. Corner / Angle Connectors

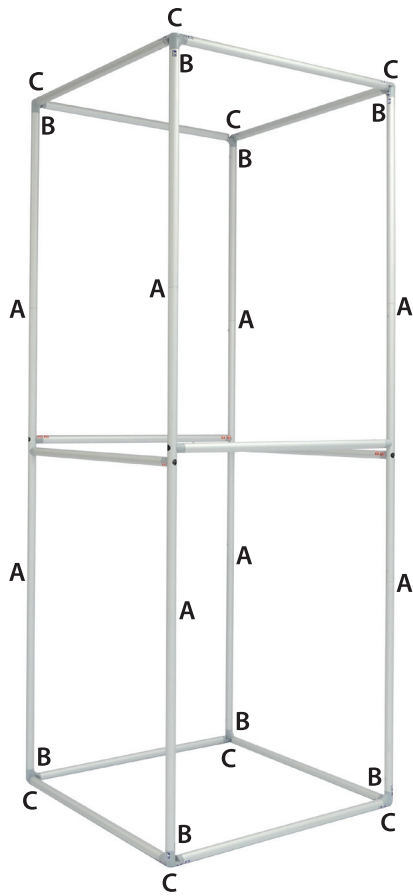


Connect the corner/angle connectors at both ends of each vertical tube. Match the labels, located on the ends of every piece (ex:B1:B1,B8:B8,etc.).

C. Horizontal Tube



Connect the horizontal tubes to the remaining open ends of each corner/angle connector. Match the labels, located at each end. The frame setup is complete.

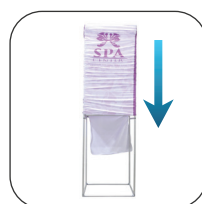


1. Drape



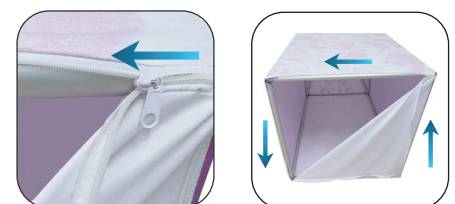
Drape the top of the frame, starting with the open end (bottom) of the graphic.

2. Pull



Pull the graphic all the way down until taut.

3. Zip



Zip the bottom shut to maximize tension. The graphic install is complete.