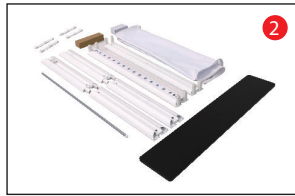


# VIVID Counter Storage



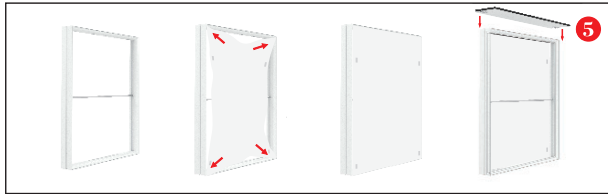
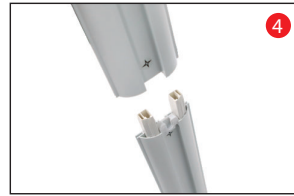
1. A big package and a small package



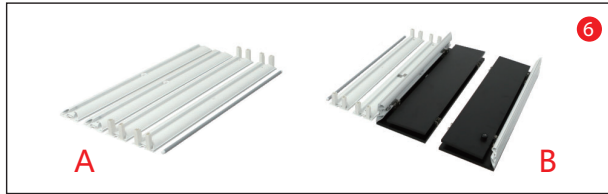
2. Open the small package



3-4. Install the frame according to the labels



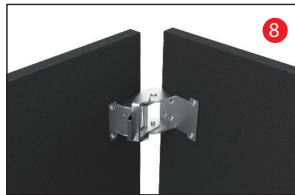
5. Front counter finished



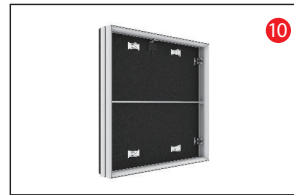
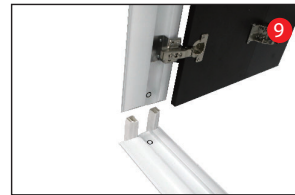
6. Part A and Part B are packed into the big package



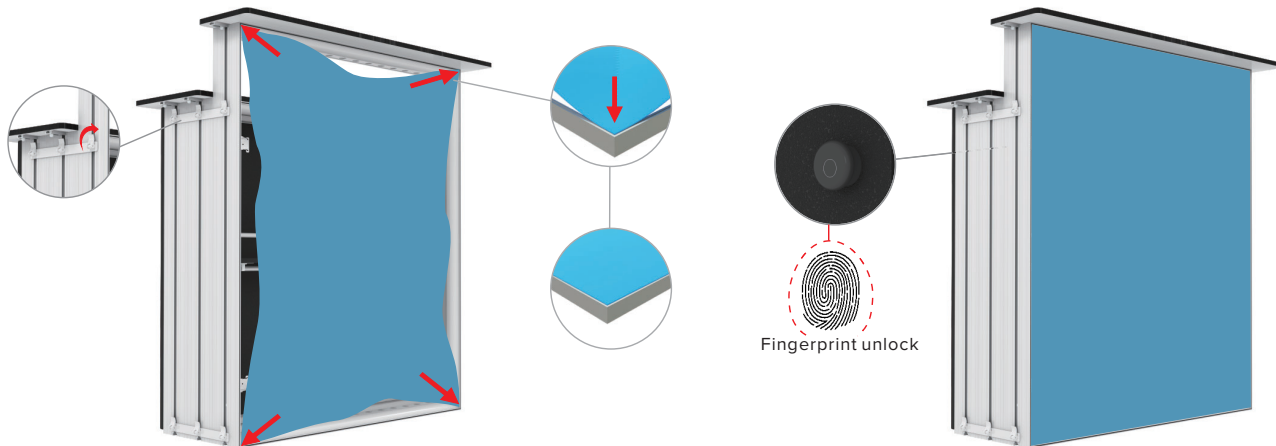
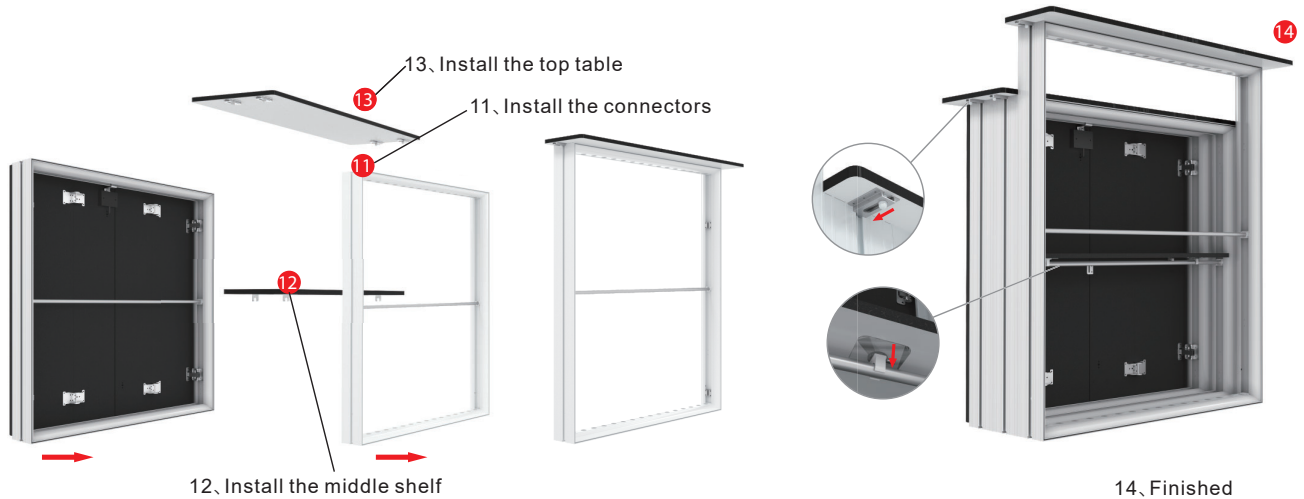
7. Install part A according to the labels, Part A finished.



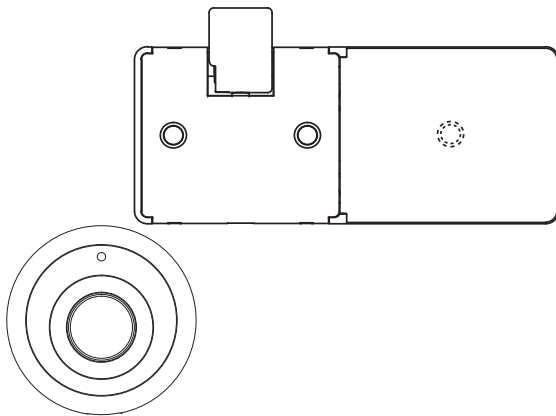
8-9. Install part B according to the labels



10. Part B finished



# FINGERPRINT CABINET LOCK USER MANUAL



## Feature

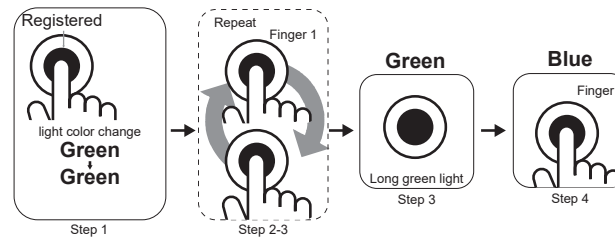
1. Biometric sensor, high sensitive and rapid responsive
2. Max 20 fingerprints to hold for multiple users
3. E-Key for emergency key and management
4. Zinc alloy panel with elegant design
5. Surface mounted, widely used in drawer, cabinet, wardrobe etc.

V000230418

## Automatic Mode

### 1. How to add new fingerprints

- Put a registered finger on sensor, green light and latch retracts, keep holding, green light on, then remove
- Blue light, put a finger on, green light then remove
- Put the finger on, green light then remove; repeat until a long green light for 2 seconds (The fingerprint is registered)
- Blue light, add more new fingerprints

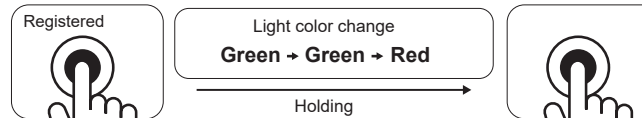


### Note

- 1). Make sure add the fingerprint before using. Any finger can unlock in the factory setting
- 2) In order to keep the lock work well, to add no less than 3 fingerprints

### 2. How to delete fingerprints

- Put any registered on sensor, green light, holding, green light again, keep holding, green light then red light flashed, then remove
- green light for 2 seconds, all the fingerprints deleted



### 3. How to lock

- Push the door closed, door lock automatically

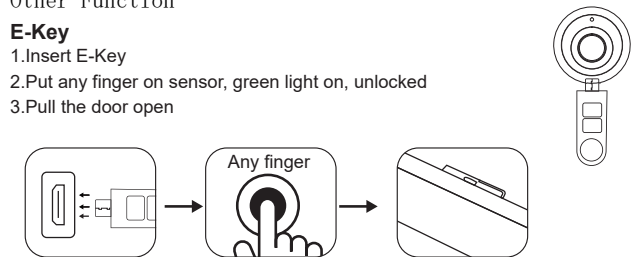
### 4. How to unlock

- Put any registered fingerprint on sensor
- Green light, unlocked
- Pull the door open

## Other Function

### E-Key

1. Insert E-Key
2. Put any finger on sensor, green light on, unlocked
3. Pull the door open

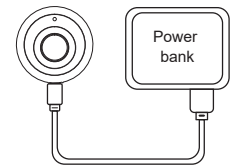


### 2. Low battery warning

- In case of low battery, to put on the registered fingerprint, green light flashes once, and red light flashes thrice, then a long green light, unlocked. To change the battery immediately after door open
- Note: Use 3XAAA alkaline battery, not take Carbon battery

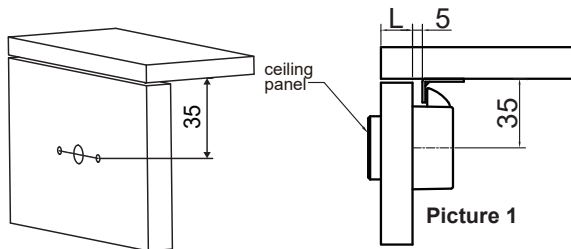
### 3. Outer Power Supply

- When low battery, can connect power bank or mobile plug for outer power supply
- After unlocked, change the battery immediately



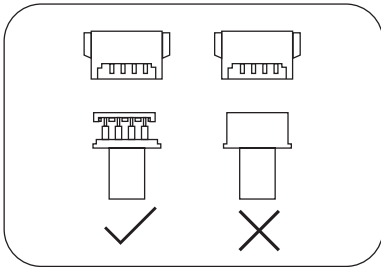
## Installation Instructions


1. Put the installation drawing on the door, approx. 35mm between the door frame and center hole (Picture 1), then drill the hole



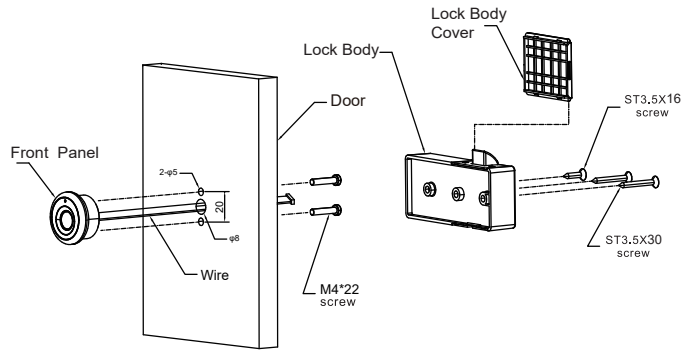
Picture 1

wire connection



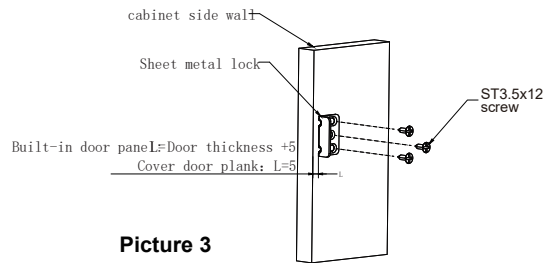
	Door Thickness (mm)	Screw
	14mm~16mm	(M4*20) X 2
	16mm~18mm	(M4*22) X 2
	19mm~21mm	(M4*25) X 2

2. Connect one end of the panel connection line through the middle round hole with the lock box, first use two cross pan head screws M4\*22 to fix the panel on the door panel, organize the connection line to avoid being pressed, then use two cross countersunk head wood screws 3.5\*30 and one cross countersunk head wood screw 3.5\*16 to fix the lock box on the door panel.



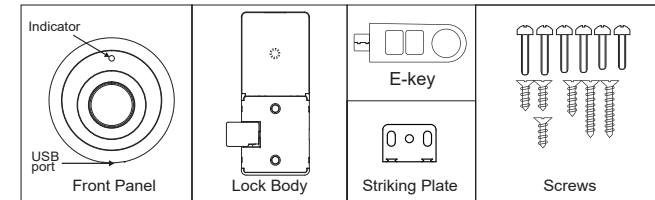
Picture 2

3. Fix the striking plate by screw ST3.5X12 (Make sure latch works well)

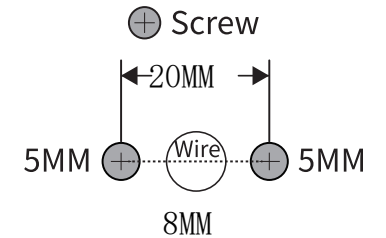


Picture 3

## COMPONENT



## INSTALLATION DRAWING



Follow the drawing to drill the hole